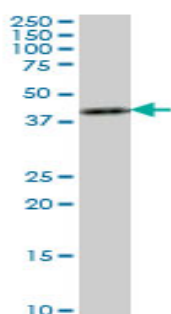


## Mouse monoclonal antibody to human ASCL1 [3D3]: IgG

<b>Catalogue No.:</b>	M-803-100
<b>Description:</b>	This protein plays a role in neuronal commitment and differentiation in most regions of the CNS and of several neuronal lineages in the PNS. It is also essential for the generation of olfactory and autonomic neurons. The unprocessed precursor is 236 amino acids in length and 25.45KDa. ASCL1 contains one basic helix-loop-helix (bHLH) domain. It activates transcription by binding to the Ebox (5'-CANNTG-3') and efficient DNA binding requires dimerisation with other bHLH proteins. It forms a heterodimer with TCF3.
<b>Batch No.:</b>	See product label
<b>Unit size:</b>	100 ug
<b>Antigen:</b>	The antigen was a partial recombinant protein of human ASCL1 (amino acids 137 to 236) with a GST tag.
<b>Isotype:</b>	IgG2a, kappa
<b>Clone:</b>	3D3
<b>Other Names:</b>	Achaete-scute homolog 1; HASH1; ASCL1; ASH1; MASH1
<b>Accession:</b>	ASCL1_HUMAN
<b>Produced in:</b>	Mouse
<b>Purity:</b>	Protein G purified immunoglobulin
<b>Applications:</b>	This antibody is recommended for WB, ELISA and sandwich ELISA. Biosensis recommends optimal dilutions/concentrations should be determined by the end user.
<b>Specificity:</b>	The specificity of this antibody was confirmed by WB and ELISA against the recombinant protein with the GST tag. GST tag alone was used as a negative control.
<b>Cross-reactivity:</b>	Human, other species have not been tested.
<b>Form:</b>	Lyophilised from PBS pH 7.4
<b>Reconstitution:</b>	Reconstitute in 100 uL of sterile water. Centrifuge to remove any insoluble material.
<b>Storage:</b>	After reconstitution keep aliquots at -20C for higher stability or at 2-8C with an appropriate antibacterial agent. Glycerol (1:1) may be added for additional stability. Avoid repetitive freeze/thaw cycles.
<b>Expiry Date:</b>	12 months after purchase



The mouse monoclonal antibody to human ASCL1 [3D3], catalogue number M-803-100, detected a band of 40 KDa when used for western blot against denatured human amelanotic melanoma cell lysate.

FOR RESEARCH USE ONLY