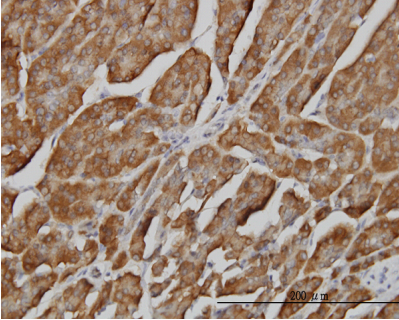


Mouse monoclonal antibody to human PIP [2E1]: IgG

Catalogue No.:	M-805-100
Description:	PIP belongs to the inositol monophosphatase family. It hydrolyses adenosine 3'-phosphate 5'-phosphosulfate to adenosine 5-phosphosulfate and 3',2'-phosphoadenosine 5'-phosphate to AMP. It requires magnesium as a cofactor. Lithium is an uncompetitive inhibitor and inositol 1,4-bisphosphate is a competitive inhibitor of PIP. Lithium is one of the drugs used to treat manic depression and the inhibition of PIP may account for lithium-induced nephrotoxicity.
Batch No.:	See product label
Unit size:	100 ug
Antigen:	Recombinant protein of amino acids 1 to 100 of human PIP with a GST tag.
Clone:	[2E1]
Other Names:	3',5'-bisphosphate nucleotidase 1; bisphosphatase 3'-nucleotidase 1; PAP-inositol-1;4-phosphatase; BPNT1
Accession:	BPNT1_HUMAN
Produced in:	Mouse
Purity:	Protein G purified immunoglobulin
Applications:	This antibody is recommended for WB, ELISA, sandwich ELISA, IHC and immunofluorescence. It is recommended to be used at 3ug/mL for IHC and 10ug/mL for immunofluorescence. This antibody has a detection limit of 0.03ng/mL in sandwich ELISA when using the recombinant protein. Biosensis recommends optimal dilutions/concentrations should be determined by the end user.
Specificity:	The specificity of this antibody has been confirmed by WB against the recombinant protein and in HeLa cell lysate.
Cross-reactivity:	This antibody has not yet been tested in other species.
Form:	Lyophilised from PBS pH 7.2
Reconstitution:	Reconstitute in 100 uL of sterile water. Centrifuge to remove any insoluble material.
Storage:	After reconstitution keep aliquots at -20C for higher stability or at 2-8C with an appropriate antibacterial agent. Glycerol (1:1) may be added for additional stability. Avoid repetitive freeze/thaw cycles.
Expiry Date:	12 months after purchase

FOR RESEARCH USE ONLY

Mouse monoclonal antibody to human PIP [2E1]: IgG



Immunohistochemistry of mouse monoclonal antibody to human PIP [2E1], catalogue number M-805-100, at a concentration of 3 μ g/ml, on formalin-fixed and paraffin-embedded human pancreas.

biosensis

FOR RESEARCH USE ONLY