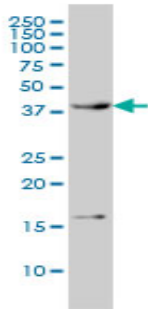


Mouse monoclonal antibody to human CaM kinase 1 [3G1]: IgG

Catalogue No.:	M-810-100
Description:	CaM kinase I belongs to a calcium-triggered signalling cascade involved in transcriptional regulation, hormone production, translational regulation, regulation of actin filament organisation and neurite outgrowth. CaM kinase I is involved in calcium-dependent activation of the ERK pathway. It phosphorylates proteins with the substrate consensus sequence [MVLIF]-x-R-x(2)-[ST]-x(3)-[MVLIF]. It is activated by calcium ions or calmodulin. It reaches its maximum catalytic activity when phosphorylated by CAMKK1 or CAMKK2. CaM kinase I has a length of 370 amino acids (unprocessed precursor) and a predicted molecular weight of 41.3KDa. It is a monomer that exists in many tissues and is located within the cytoplasm or nucleus. It belongs to the protein kinase superfamily, the CAMK Ser/Thr protein kinase family and the CaMK subfamily.
Batch No.:	See product label
Unit size:	100 ug
Antigen:	Partial recombinant protein of human CaM kinase 1 (amino acids 271 to 370) with a GST tag.
Clone:	3G1
Other Names:	Calcium/calmodulin-dependent protein kinase type 1; CaM-KI; CaM kinase I alpha; CAMKI-alpha; CAMK1
Accession:	KCC1A_HUMAN
Produced in:	Mouse
Purity:	Protein G purified immunoglobulin
Applications:	This antibody is recommended for WB and both direct and sandwich ELISA. This antibody has a detection limit of 0.3ng/mL for recombinant GST tagged CaM kinase 1 when used in sandwich ELISA. Biosensis recommends optimal dilutions/concentrations should be determined by the end user.
Specificity:	The specificity of this antibody has been confirmed by WB and ELISA against the recombinant GST tagged CaM Kinase 1 protein.
Cross-reactivity:	No other species have been tested yet.
Form:	Lyophilised from PBS pH 7.2
Reconstitution:	Reconstitute in 100 uL of sterile water. Centrifuge to remove any insoluble material.
Storage:	After reconstitution keep aliquots at -20C for higher stability or at 2-8C with an appropriate antibacterial agent. Glycerol (1:1) may be added for additional stability. Avoid repetitive freeze/thaw cycles.
Expiry Date:	12 months after purchase

FOR RESEARCH USE ONLY

Mouse monoclonal antibody to human CaM kinase 1 [3G1]: IgG



Mouse monoclonal antibody to human CaM kinase 1 [3G1], catalogue number M-810-100, detects a band of molecular weight 42KDa in human promyelocytic leukemia (HL-60) cell lysate under denaturing conditions for WB.

biosensis

FOR RESEARCH USE ONLY