



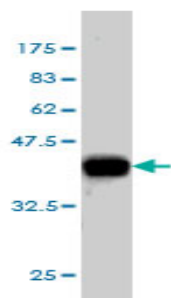
Mouse monoclonal antibody to human Epidermal growth factor-like 1[2F7]: IgG

Catalogue No.:	M-812-100
Description:	Epidermal growth factor-like 1 belongs to the G-protein coupled receptor 2 family and the LN-TM7 subfamily. The unprocessed precursor has a length of 3312 amino acids and a predicted molecular weight of 358.3 KDa. It contains nine cadherin domains, eight EGF-like domains, one GPS domains, one laminin EGF-like domains and two laminin G-like domains. It is a transmembrane protein and is thought to have an important role in cell to cell signaling during nervous system formation.
Batch No.:	See product label
Unit size:	100 ug
Antigen:	A partial recombinant protein of human Epidermal growth factor-like 1 (amino acids 71 to 180) with a GST tag.
Clone:	2F7
Other Names:	Cadherin EGF LAG seven-pass G-type receptor 3; Flamingo homolog 1; hFmi1; Multiple epidermal growth factor-like domains 2; CELSR3; CDHF11; EGFL1; FMI1; KIAA0812; MEGF2
Accession:	CEL3_HUMAN
Produced in:	Mouse
Purity:	Protein G purified immunoglobulin
Applications:	This antibody is recommended for WB and sandwich ELISA. Biosensis recommends optimal dilutions/concentrations should be determined by the end user.
Specificity:	The specificity of this antibody was demonstrated by WB and ELISA against the GST tagged recombinant Epidermal growth factor-like 1 protein.
Cross-reactivity:	This antibody has not been tested against other species.
Form:	Lyophilised from PBS pH 7.2
Reconstitution:	Reconstitute in 100 uL of sterile water. Centrifuge to remove any insoluble material.
Storage:	After reconstitution keep aliquots at -20C for higher stability or at 2-8C with an appropriate antibacterial agent. Glycerol (1:1) may be added for additional stability. Avoid repetitive freeze/thaw cycles.
Expiry Date:	12 months after purchase

FOR RESEARCH USE ONLY



Mouse monoclonal antibody to human Epidermal growth factor-like 1 [2F7]: IgG



Western blot analysis on recombinant GST tagged Epidermal growth factor-like 1 protein using mouse monoclonal antibody to human Epidermal growth factor-like 1 [2F7], catalogue number M-812-100.

biosensis

FOR RESEARCH USE ONLY