



## Mouse monoclonal antibody to human Calcium homeostasis endoplasmic reticulum protein [2H5]: IgG

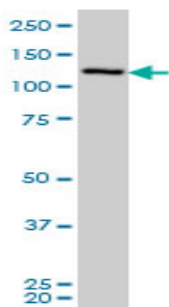
<b>Catalogue No.:</b>	M-813-50
<b>Description:</b>	Calcium homeostasis endoplasmic reticulum protein is involved in calcium homeostasis, growth and proliferation. The unprocessed precursor is 916 amino acids long and has a predicted mass of 103.6KDa. It is expressed in brain, placenta, lung, liver, kidney, pancreas, cardiac and skeletal muscle, and in cultured human erythroleukemia cells and Dami cells. It localises to the cytoplasm, the perinuclear region and the endoplasmic reticulum. Calcium homeostasis endoplasmic reticulum protein contains one G-patch domain, one RPR domain and one SURP motif repeat.
<b>Batch No.:</b>	See product label
<b>Unit size:</b>	50 ug
<b>Antigen:</b>	Partial recombinant protein of human Calcium homeostasis endoplasmic reticulum protein (amino acids 827 to 915) with a GST tag.
<b>Clone:</b>	2H5
<b>Other Names:</b>	SR-related CTD associated factor 6; ERPROT 213-21; CHERP; DAN26; SCAF6
<b>Accession:</b>	CHERP_HUMAN
<b>Produced in:</b>	Mouse
<b>Purity:</b>	Protein G purified immunoglobulin
<b>Applications:</b>	This antibody is recommended for WB. Biosensis recommends optimal dilutions/concentrations should be determined by the end user.
<b>Specificity:</b>	The specificity of this antibody has been confirmed by WB against the GST tagged, recombinant Calcium homeostasis endoplasmic reticulum protein protein.
<b>Cross-reactivity:</b>	Cross reactivity with other species has not been tested yet.
<b>Form:</b>	Lyophilised from PBS pH 7.2
<b>Reconstitution:</b>	Reconstitute in 50 uL of sterile water. Centrifuge to remove any insoluble material.
<b>Storage:</b>	After reconstitution keep aliquots at -20C for higher stability or at 2-8C with an appropriate antibacterial agent. Glycerol (1:1) may be added for additional stability. Avoid repetitive freeze/thaw cycles.
<b>Expiry Date:</b>	12 months after purchase

---

FOR RESEARCH USE ONLY



## Mouse monoclonal antibody to human Calcium homeostasis endoplasmic reticulum protein [2H5]: IgG



Western blot analysis on human neuroblastoma lysate using mouse monoclonal antibody to human Calcium homeostasis endoplasmic reticulum protein [2H5], catalogue number M-813-50. This antibody detects a band at ~120KDa.

biosensis

---

FOR RESEARCH USE ONLY