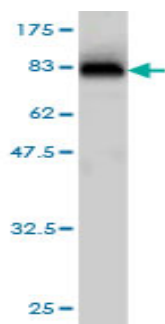


Mouse monoclonal antibody to human copine 6 [6D11]: IgG

Catalogue No.:	M-816-100
Description:	Copine 6 belongs to the copine family and contains two C2 domains and one von Willebrand factor A domain. The unprocessed precursor has a length of 557 amino acids and a predicted molecular weight of 62 kDa. This protein exhibits calcium-dependent phospholipid binding properties and is thought to function in membrane trafficking and in synaptic plasticity.
Batch No.:	See product label
Unit size:	100 ug
Antigen:	Recombinant human copine 6 protein with GST tag.
Clone:	6D11
Other Names:	Copine VI; Neuronal-copine; N-copine; CPNE6
Accession:	CPNE6_HUMAN
Produced in:	Mouse
Purity:	Protein G purified immunoglobulin
Applications:	This antibody is recommended for WB, direct and sandwich ELISA. Biosensis recommends optimal dilutions/concentrations should be determined by the end user.
Specificity:	The specificity of this antibody has been confirmed by WB and ELISA against the antigen.
Cross-reactivity:	Other species have not yet been tested.
Form:	Lyophilised from PBS pH 7.2
Reconstitution:	Reconstitute in 100 uL of sterile water. Centrifuge to remove any insoluble material.
Storage:	After reconstitution keep aliquots at -20C for higher stability. Glycerol (1:1) may be added for additional stability. Avoid repetitive freeze/thaw cycles.
Expiry Date:	12 months after purchase



Western blot detection of recombinant GST tagged human copine 6 using mouse monoclonal antibody to human copine 6 [6D11], catalogue number M-816-100. This antibody detects a band of 87.4 kDa. Note the GST tag has a MW of 26 kDa.

FOR RESEARCH USE ONLY