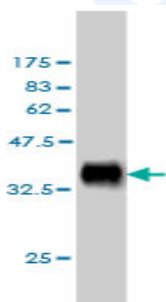


## Mouse monoclonal antibody to human Delta 1 [4F8]: IgG

<b>Catalogue No.:</b>	M-823-100
<b>Description:</b>	Delta-1 acts as a ligand for Notch receptors. It blocks the differentiation of progenitor cells into the B-cell lineage while promoting cells with the characteristics of a T-cel/NK-cell precursor. It is expressed in heart and pancreas, with lower expression in brain and muscle and very little expression in placenta, lung, liver and kidney. Delta-1 is a transmembrane protein which is ubiquitinated by MIB, leading to its endocytosis and subsequent degradation. It contains one DSL domain and eight EGF-like domains.
<b>Batch No.:</b>	See product label
<b>Unit size:</b>	100 ug
<b>Antigen:</b>	Partial recombinant protein of human Delta-1 (amino acids 18 to 109) with a GST tag.
<b>Clone:</b>	4F8
<b>Other Names:</b>	Delta-like protein 1; Drosophila Delta homolog 1; H-Delta-1; DLL1
<b>Accession:</b>	DLL1_HUMAN
<b>Produced in:</b>	Mouse
<b>Purity:</b>	Protein G purified immunoglobulin
<b>Applications:</b>	This antibody is recommended for WB and sandwich ELISA. Biosensis recommends optimal dilutions/concentrations should be determined by the end user.
<b>Specificity:</b>	The specificity of this antibody has been confirmed by WB and ELISA against the antigen.
<b>Cross-reactivity:</b>	Other species have not been tested.
<b>Form:</b>	Lyophilised from PBS pH 7.4
<b>Reconstitution:</b>	Reconstitute in 100 uL of sterile water. Centrifuge to remove any insoluble material.
<b>Storage:</b>	After reconstitution keep aliquots at -20C for higher stability or at 2-8C with an appropriate antibacterial agent. Glycerol (1:1) may be added for additional stability. Avoid repetitive freeze/thaw cycles.
<b>Expiry Date:</b>	12 months after purchase



WB detection of GST tagged recombinant Delta-1 using mouse monoclonal antibody to human Delta-1 [4F8], catalogue number M-823-100. The GST tag has a molecular weight of 26kDa.

FOR RESEARCH USE ONLY