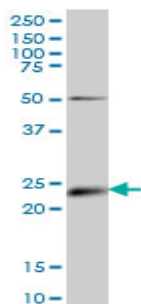


Mouse monoclonal to human Ephrin-A5 [1F12]: IgG

Catalogue No.:	M-832-100
Description:	Ephrin-A5 is a member of the ephrin (EPH) gene family. The EPH and EPH-related receptors comprise the largest subfamily of receptor protein-tyrosine kinases and have been implicated in mediating developmental events, particularly in the nervous system. EPH receptors typically have a single kinase domain and an extracellular region containing a Cys-rich domain and 2 fibronectin type III repeats. Ephrin-A5 prevents axon bundling in cocultures of cortical neurons with astrocytes, a model of late stage nervous system development and differentiation.
Batch No.:	See product label
Unit size:	100 ug
Antigen:	Partial recombinant protein of human Ephrin-A5 (aa 114 to 204) with a GST tag.
Clone:	1F12
Other Names:	EPH-related receptor tyrosine kinase ligand 7; LERK-7; AL-1; EFNA5; EPLG7; LERK7
Accession:	EFNA5_HUMAN
Produced in:	Mouse
Purity:	Protein G purified immunoglobulin
Applications:	This antibody is recommended for WB, and sandwich ELISA. Biosensis recommends optimal dilutions/concentrations should be determined by the end user.
Specificity:	Specificity has been confirmed by WB and direct ELISA against the antigen.
Cross-reactivity:	This antibody cross reacts with mouse. Other species have not been tested.
Form:	Lyophilised from PBS pH 7.2
Reconstitution:	Reconstitute in 100 uL of sterile water. Centrifuge to remove any insoluble material.
Storage:	After reconstitution keep aliquots at -20C for higher stability or at 2-8C with an appropriate antibacterial agent. Glycerol (1:1) may be added for additional stability. Avoid repetitive freeze/thaw cycles.
Expiry Date:	12 months after purchase



Western blot detection of Ephrin-A5 in mouse NIH/Swiss embryo whole cell lysate using Mouse monoclonal antibody to human Ephrin-A5, catalogue number M-832-100.

FOR RESEARCH USE ONLY