

## Mouse monoclonal to human Ephrin type-B receptor 2 [4D1]: IgG

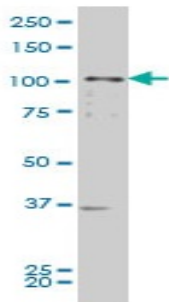
<b>Catalogue No.:</b>	M-834-100
<b>Description:</b>	Ephrin receptors and their ligands, the ephrins, mediate numerous developmental processes, particularly in the nervous system. The Eph family of receptors are divided into 2 groups based on the similarity of their extracellular domain sequences and their affinities for binding ephrin-A and ephrin-B ligands. Ephrin type-B receptor 2 is a receptor for members of the ephrin-B family and it acts as a tumor suppressor. It is a single-pass type I membrane protein that is expressed in brain, heart, lung, kidney, placenta, pancreas, liver and skeletal muscle. It is preferentially expressed in fetal brain. Defects in this protein are involved in the development of prostate cancer metastasis to the brain.
<b>Batch No.:</b>	Refer to label
<b>Unit size:</b>	100 ug
<b>Antigen:</b>	Partial recombinant protein of human Ephrin type-B receptor 2 (aa 226 to 325) with a GST tag.
<b>Clone:</b>	4D1
<b>Other Names:</b>	Tyrosine-protein kinase receptor EPH-3; DRT; Receptor protein-kinase HEK5; ERK; Tyrosine-protein kinase TYRO5; Renal carcinoma antigen NY-REN-47; EPHB2; DRT; EPHT3; EPTH3; ERK; HEK5; TYRO4
<b>Accession:</b>	EPHB2_HUMAN
<b>Produced in:</b>	Mouse
<b>Purity:</b>	Protein G purified immunoglobulin
<b>Applications:</b>	This antibody is recommended for WB, and ELISA. Biosensis recommends optimal dilutions/concentrations should be determined by the end user.
<b>Specificity:</b>	Specificity has been confirmed by WB and direct ELISA against the antigen.
<b>Cross-reactivity:</b>	This antibody cross reacts with mouse. Other species have not been tested.
<b>Form:</b>	Lyophilised from PBS pH 7.2
<b>Reconstitution:</b>	Reconstitute in 100 uL of sterile water. Centrifuge to remove any insoluble material.
<b>Storage:</b>	After reconstitution keep aliquots at -20C for higher stability or at 2-8C with an appropriate antibacterial agent. Glycerol (1:1) may be added for additional stability. Avoid repetitive freeze/thaw cycles.
<b>Expiry Date:</b>	12 months after purchase

---

FOR RESEARCH USE ONLY

---

## Mouse monoclonal to human Ephrin type-B receptor 2 [4D1]: IgG



Western blot detection of Ephrin type-B receptor 2 in mouse NIH/Swiss embryo whole cell lysate using mouse monoclonal to human Ephrin type-B receptor 2, catalogue number M-834-100.

biosensis

---

FOR RESEARCH USE ONLY