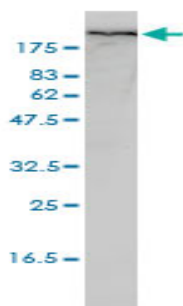




Mouse monoclonal to human Filamin A [4E10-1B2]: IgG

Catalogue No.:	M-835-100
Description:	Filamin A, is a 280-kD protein that promotes orthogonal branching of actin filaments cortical cytoplasm. It anchors various transmembrane proteins to the actin cytoskeleton and serves as a scaffold for a wide range of cytoplasmic signaling proteins. Remodeling of the cytoskeleton is central to the modulation of cell shape and migration.
Batch No.:	See product label
Unit size:	100 ug
Antigen:	Partial recombinant protein of human Filamin A (aa 1809 to 2647) with a GST tag.
Clone:	4E10-1B2
Other Names:	Alpha-filamin; Filamin-1; Endothelial actin-binding protein; Actin-binding protein 280; ABP-280; Non-muscle filamin; FLNA; FLN; FLN1
Accession:	FLNA_HUMAN
Produced in:	Mouse
Purity:	Protein G purified immunoglobulin
Applications:	This antibody is recommended for WB, IHC and sandwich ELISA. Biosensis recommends optimal dilutions/concentrations should be determined by the end user.
Specificity:	Specificity has been confirmed by WB and direct ELISA against the antigen.
Cross-reactivity:	Human. Other species have not been tested.
Form:	Lyophilised from PBS pH 7.2
Reconstitution:	Reconstitute in 100 uL of sterile water. Centrifuge to remove any insoluble material.
Storage:	After reconstitution keep aliquots at -20C for higher stability or at 2-8C with an appropriate antibacterial agent. Glycerol (1:1) may be added for additional stability. Avoid repetitive freeze/thaw cycles.
Expiry Date:	12 months after purchase



Western blot detection of Filamin A in human promyelocytic leukemia cell lysate using mouse monoclonal to human Filamin A, catalogue number M-835-100.

FOR RESEARCH USE ONLY