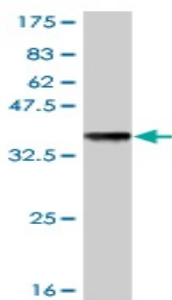




## Mouse monoclonal to human glycine receptor subunit alpha-1 [2E6]: IgG

<b>Catalogue No.:</b>	M-838-100
<b>Description:</b>	Glycine receptor is a neurotransmitter-gated ion channel. When bound to its ligand, glycine, chloride conductance is increased and consequently inhibits neuronal firing. It is a pentameric receptor composed of alpha and beta subunits and localises to the cell junction, synapse and postsynaptic cell membrane. Defects in GLRA1 cause startle disease (STHE) which is also known as hereditary hyperekplexia or congenital stiff-person syndrome.
<b>Batch No.:</b>	Refer to product label
<b>Unit size:</b>	100 ug
<b>Antigen:</b>	Partial recombinant protein of human glycine receptor subunit alpha-1 (aa 121 to 221) with a GST tag.
<b>Clone:</b>	[2E6]
<b>Other Names:</b>	Glycine receptor 48kDa subunit; Glycine receptor strychnine-binding subunit; GLRA1
<b>Accession:</b>	GLRA1_HUMAN
<b>Produced in:</b>	Mouse
<b>Purity:</b>	Protein G purified immunoglobulin
<b>Applications:</b>	This antibody is recommended for WB, and sandwich ELISA. Biosensis recommends optimal dilutions/concentrations should be determined by the end user.
<b>Specificity:</b>	Specificity has been confirmed by WB and direct ELISA against the antigen.
<b>Cross-reactivity:</b>	Human. Other species have not been tested.
<b>Form:</b>	Lyophilised from PBS pH 7.2
<b>Reconstitution:</b>	Reconstitute in 100 uL of sterile water. Centrifuge to remove any insoluble material.
<b>Storage:</b>	After reconstitution keep aliquots at -20C for higher stability or at 2-8C with an appropriate antibacterial agent. Glycerol (1:1) may be added for additional stability. Avoid repetitive freeze/thaw cycles.
<b>Expiry Date:</b>	12 months after purchase



Western blot detection of recombinant GST tagged human glycine receptor subunit alpha-1 using catalogue number M-838-100.

FOR RESEARCH USE ONLY