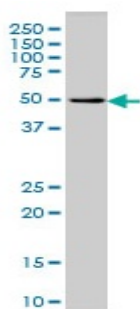




## Mouse monoclonal to human G-protein coupled receptor 24 [3D7]: IgG

<b>Catalogue No.:</b>	M-839-100
<b>Description:</b>	G-protein coupled receptor 24 belongs to the G-protein coupled receptor 1 family and binds melanin-concentrating hormone. It is coupled to both G proteins that inhibit adenylyl cyclase and G proteins that activate phosphoinositide hydrolysis. It is a transmembrane protein that is highly expressed in the brain, in particularly in the frontal cortex and hypothalamus. It is also expressed in the liver and heart at lower levels.
<b>Batch No.:</b>	See product label
<b>Unit size:</b>	100 ug
<b>Antigen:</b>	Partial recombinant protein of human G-protein coupled receptor 24 (aa 14 to 114) with a GST tag.
<b>Clone:</b>	3D7
<b>Other Names:</b>	Melanin-concentrating hormone receptor 1; MCH receptor 1; MCHR-1; MCH-R1; MCH-1R; MCH1R; MCHR; Somatostatin receptor-like protein; SLC-1; MCHR1; GPR24; SLC1
<b>Accession:</b>	MCHR1_HUMAN
<b>Produced in:</b>	Mouse
<b>Purity:</b>	Protein G purified immunoglobulin
<b>Applications:</b>	This antibody is recommended for WB, and sandwich ELISA. Biosensis recommends optimal dilutions/concentrations should be determined by the end user.
<b>Specificity:</b>	Specificity has been confirmed by WB and direct ELISA against the antigen.
<b>Cross-reactivity:</b>	Human. Other species have not been tested.
<b>Form:</b>	Lyophilised from PBS pH 7.2
<b>Reconstitution:</b>	Reconstitute in 100 uL of sterile water. Centrifuge to remove any insoluble material.
<b>Storage:</b>	After reconstitution keep aliquots at -20C for higher stability or at 2-8C with an appropriate antibacterial agent. Glycerol (1:1) may be added for additional stability. Avoid repetitive freeze/thaw cycles.
<b>Expiry Date:</b>	12 months after purchase



Western blot detection of G-protein coupled receptor 24 in human promyelocytic leukemia lysate using Mouse monoclonal antibody to human G-protein coupled receptor 24, catalogue number M-839-100.

FOR RESEARCH USE ONLY