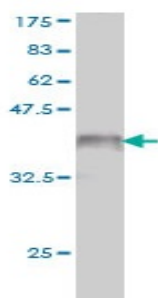


Mouse monoclonal to human Orexin receptor type 2 [1E3]: IgG

Catalogue No.:	M-840-100
Description:	Orexin receptor type 2 is a nonselective, high-affinity receptor for both orexin-A and orexin-B neuropeptides. It is involved in the central feedback mechanism that regulates feeding behaviour. It is a transmembrane protein and belongs to the G-protein coupled receptor 1 family.
Batch No.:	Refer to product label
Unit size:	100 ug
Antigen:	Partial recombinant protein of human Orexin receptor type 2 (aa 1 to 55) with a GST tag.
Clone:	[1E3]
Other Names:	Ox2r; Hypocretin receptor type 2; HCRTR2
Accession:	OX2R_HUMAN
Produced in:	Mouse
Purity:	Protein G purified immunoglobulin
Applications:	This antibody is recommended for WB, and sandwich ELISA. Biosensis recommends optimal dilutions/concentrations should be determined by the end user.
Specificity:	Specificity has been confirmed by WB and direct ELISA against the antigen.
Cross-reactivity:	Human. Other species have not been tested.
Form:	Lyophilised from PBS pH 7.2
Reconstitution:	Reconstitute in 100 uL of sterile water. Centrifuge to remove any insoluble material.
Storage:	After reconstitution keep aliquots at -20C for higher stability or at 2-8C with an appropriate antibacterial agent. Glycerol (1:1) may be added for additional stability. Avoid repetitive freeze/thaw cycles.
Expiry Date:	12 months after purchase



WB detection of the antigen using mouse monoclonal antibody to human orexin receptor type 2, catalogue number M-840-100. Note the GST tag alone has a molecular weight of 26KDa.

FOR RESEARCH USE ONLY