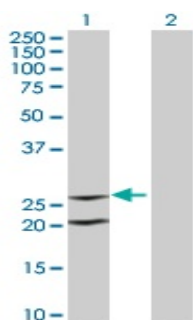




Mouse monoclonal to human Interleukin 6 [3E4]: IgG

Catalogue No.:	M-842-100
Description:	Interleukin 6 (IL-6) is a cytokine with many biological functions. Some of its roles include the final differentiation of B-cells into Ig-secreting cells, induction of meloma and plasmacytoma growth, induction of nerve cell differentiation, and in hepatocytes, induction of acute phase reactants. IL-6 is secreted and is N- and O-glycosylated post translationally. Genetic variations in IL-6 can be correlated with bone mineral density and low bone mineral density is a risk factor for osteoporosis. Defects in IL-6 are associated with juvenile rheumatoid arthritis and at least one polymorphism in IL-6 makes HIV-infected men susceptible to Kaposi sarcoma which is a relatively rare malignant tumour.
Batch No.:	See product label
Unit size:	100 ug
Antigen:	Recombinant human IL-6 protein with GST tag.
Clone:	[3E4]
Other Names:	Il-6; Interleukin-6; B-cell stimulatory factor 2; BSF-2; Interferon beta-2; Hybridoma growth factor; CTL differentiation factor; CDF; IL6; IFNB2
Accession:	IL6_HUMAN
Produced in:	Mouse
Purity:	Protein G purified immunoglobulin
Applications:	This antibody is recommended for WB and ELISA. Biosensis recommends optimal dilutions/concentrations should be determined by the end user.
Specificity:	Specificity has been confirmed by WB and direct ELISA against the antigen.
Cross-reactivity:	Human. Other species have not been tested.
Form:	Lyophilised from PBS pH 7.2
Reconstitution:	Reconstitute in 100 uL of sterile water. Centrifuge to remove any insoluble material.
Storage:	After reconstitution keep aliquots at -20C for higher stability or at 2-8C with an appropriate antibacterial agent. Glycerol (1:1) may be added for additional stability. Avoid repetitive freeze/thaw cycles.
Expiry Date:	12 months after purchase



Western blot detection of IL-6 in transfected 293T cells. Lane 1: IL-6 transfected lysate. Lane 2: Non-transfected lysate.

FOR RESEARCH USE ONLY