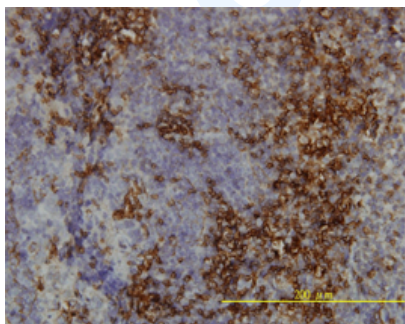


Mouse monoclonal antibody to human LY-6H [3E10]: IgG

Catalogue No.:	M-845-100
Description:	The LY6 antigens are a family of glycosylphosphatidylinositol-anchored cell surface glycoproteins. LY-6H belongs to the LY6 family and it encodes a 140 amino acid polypeptide that is 23-33% identical to other known family members. LY-6H is highly expressed in the brain (cerebral cortex, amygdala, hippocampus and subthalamic nucleus) and in the acute leukemic cell line MOLT-3. It is also expressed at lower levels in testis, small intestine and colon.
Batch No.:	See product label
Unit size:	100 µg
Antigen:	Recombinant human LY-6H protein with GST tag.
Clone:	[3E10]
Other Names:	Lymphocyte antigen 6H; LY6H
Accession:	LY6H_HUMAN
Produced in:	Mouse
Purity:	Protein G purified immunoglobulin
Applications:	This antibody is recommended for WB, IHC and sandwich ELISA. For IHC, a concentration of 2 µg/mL is recommended. Biosensis recommends optimal dilutions/concentrations should be determined by the end user.
Specificity:	Specificity has been confirmed by WB and direct ELISA against the antigen.
Cross-reactivity:	Human. Other species have not been tested.
Form:	Lyophilised from PBS pH 7.4
Reconstitution:	Reconstitute in 100 µL of sterile water. Centrifuge to remove any insoluble material.
Storage:	After reconstitution keep aliquots at -20C for higher stability or at 2-8C with an appropriate antibacterial agent. Glycerol (1:1) may be added for additional stability. Avoid repetitive freeze/thaw cycles.
Expiry Date:	12 months after purchase



Immunohistochemical detection of LY-6H on formalin fixed, paraffin-embedded, human tonsil tissue. Anti-LY-6H primary antibody, catalogue number M-845-100, was used at a concentration of 2 µg/ml.

FOR RESEARCH USE ONLY