

## Mouse monoclonal antibody to the human Tyrosine kinase receptor type B [4D3-F10]: IgG

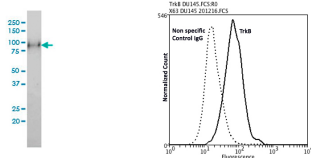
<b>Catalogue No.:</b>	M-853-100
<b>Description:</b>	Tyrosine kinase receptor type B (TrkB) is a member of the neurotrophic tyrosine receptor kinase family. It is a membrane-bound receptor and upon neurotrophin binding, it phosphorylates itself as well as MAPK pathways members. TrkB is the receptor for brain-derived neurotrophic factor (BDNF), neurotrophin-3 and neurotrophin-4/5, but not nerve growth factor (NGF). It is involved in the development and/or maintenance of the nervous system. It exists in a dynamic equilibrium between monomeric (low affinity) and dimeric (high affinity) structures. It is a tran-membrane protein. There are 3 named isoforms produced by alternative splicing. Additional isoforms seem to exist. The different forms are differentially expressed in various cell types including neurons and microglia.
<b>Batch No.:</b>	See product label
<b>Unit size:</b>	100 ug
<b>Antigen:</b>	Recombinant protein of human Tyrosine kinase receptor type B (isoform TrkB-T1) with a GST tag.
<b>Isotype:</b>	IgG2a, kappa
<b>Clone:</b>	4D3-F10
<b>Other Names:</b>	Tropomyosin-related kinase receptor; BDNF/NT-3 growth factors receptor; Neurotrophic tyrosine kinase receptor type 2; TrkB tyrosine kinase; GP145-TrkB; Trk-B; TrkB; NTRK2; TRKB
<b>Accession:</b>	NTRK2_HUMAN
<b>Produced in:</b>	Mouse
<b>Purity:</b>	Protein G purified immunoglobulin
<b>Applications:</b>	This antibody is recommended for WB, sandwich ELISA and Flow Cytometry. Use 2 ug/10 <sup>6</sup> cells for Flow Cytometry. Biosensis recommends optimal dilutions/concentrations should be determined by the end user.
<b>Specificity:</b>	Specificity has been confirmed by WB and direct ELISA against the antigen.
<b>Cross-reactivity:</b>	Human. Other species have not been tested.
<b>Form:</b>	Lyophilised from PBS pH 7.2
<b>Reconstitution:</b>	Reconstitute in 100 uL of sterile water. Centrifuge to remove any insoluble material.
<b>Storage:</b>	After reconstitution keep aliquots at -20C for higher stability or at 2-8C with an appropriate antibacterial agent. Glycerol (1:1) may be added for additional stability. Avoid repetitive freeze/thaw cycles.
<b>Expiry Date:</b>	12 months after purchase
<b>General References:</b>	1. Mizoguchi Y et al., J Immunol. 2009 Dec 15;183(12):7778-86. 2. Spencer-Segal JL et al. J Neurosci. 2011 May 4;31(18):6780-90. 3. Nakajima K et al. Glia. 1998 Nov;24(3):272-89.

---

FOR RESEARCH USE ONLY

---

## Mouse monoclonal antibody to the human Tyrosine kinase receptor type B [4D3-F10]: IgG



Left: Western blot detection of Tyrosine kinase receptor type B (TrkB) expression in human osteogenic sarcoma cell lysate. Right: Analysis of TrkB expression in human prostate cancer DU145 cell line by Flow Cytometry. DU145 cells washed twice using PBS, Blocking: 200 ug/mL Normal Sheep IgG (20 minutes), Primary antibody: Mouse Monoclonal antibody to TrkB (cat # M-853-100, 2  $\mu$ g per  $\sim 10^6$  cells) for 30 minutes on ice, Secondary antibody: Goat anti-mouse PE labeled secondary antibody (1:100 fold dilution) with incubation for 20 minutes in dark at room temperature. Non-specific Control IgG, clone X63 (cat # M-1249-100) was used as negative control under same conditions (black dashed). Flow cytometry data and results were generated using Orflo Moxiflow<sup>TM</sup> instrument and protocols.

biosensis

FOR RESEARCH USE ONLY