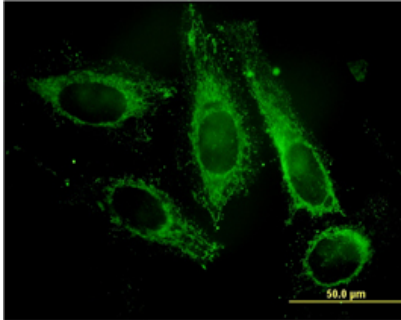


Mouse monoclonal antibody to human PAFAH subunit gamma [8C11]: IgG

Catalogue No.:	M-856-100
Description:	Cytosolic PAFAH IB is formed of three subunits, alpha (45kDa), beta (30kDa, and gamma (29kDa). Its catalytic activity of PAFAH IB resides in the beta and gamma subunits while the alpha subunit has regulatory activity. Trimer formation is not essential for the catalytic activity. Specifically, PAFAH subunit gamma inactivates platelet-activating factor by removing the acetyl group at the sn-2 position. It plays an important role during the development of the brain. In the adult, it is expressed in brain, skeletal muscle, kidney, thymus, spleen, colon, testis, ovary and peripheral blood leukocytes. In the fetus, highest expression occurs in the brain.
Batch No.:	See product label
Unit size:	100 ug
Antigen:	Partial recombinant human PAFAH subunit gamma (1-232) with a GST tag.
Clone:	8C11
Other Names:	Platelet-activating factor acetylhydrolase IB subunit gamma; PAF acetylhydrolase 29 kDa subunit; PAF-AH 29 kDa subunit; PAF-AH subunit gamma; PAFAH subunit gamma; PAFAH1B3; PAFAHG
Accession:	PA1B3_HUMAN
Produced in:	Mouse
Purity:	Protein G purified immunoglobulin
Applications:	This antibody is recommended for WB, sandwich ELISA and immunofluorescence. The recommended dilution for this antibody is 25 ug/mL for immunofluorescence. Biosensis recommends optimal dilutions/concentrations should be determined by the end user.
Specificity:	Specificity has been confirmed by WB and direct ELISA against the antigen.
Cross-reactivity:	Human and mouse. Other species have not been tested.
Form:	Lyophilised from PBS pH 7.2
Reconstitution:	Reconstitute in 100 uL of sterile water. Centrifuge to remove any insoluble material.
Storage:	After reconstitution keep aliquots at -20C for higher stability or at 2-8C with an appropriate antibacterial agent. Glycerol (1:1) may be added for additional stability. Avoid repetitive freeze/thaw cycles.
Expiry Date:	12 months after purchase

FOR RESEARCH USE ONLY

Mouse monoclonal antibody to human PFAFH subunit gamma [8C11]: IgG



Immunofluorescent detection of PFAFH subunit gamma expression in HeLa cells. The anti-PFAFH subunit gamma primary antibody, catalogue number M-856-100, was used at a concentration of 25 µg/ml.

biosensis

FOR RESEARCH USE ONLY