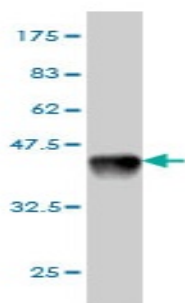


## Mouse monoclonal antibody to human Roundabout homolog 1 [2G6]: IgG

|                          |  |
|--------------------------|--|
| <b>Catalogue No.:</b>    | M-862-100  |
| <b>Description:</b>      | Roundabout homolog 1 belongs to the neural adhesion molecule (NCAM) family of receptors. It is a receptor for SLIT1 and SLIT2 which are thought to act as a molecular guidance cue in cellular migration, including axonal navigation at the ventral midline of the neural tube and projection of axons to different regions during neuronal development. It may be required for lung development. There are three named isoforms. It is widely expressed, with the exception of kidney. Defects in Roundabout homolog 1 may be a cause of breast and lung cancer. |
| <b>Batch No.:</b>        | See product label  |
| <b>Unit size:</b>        | 100 ug   |
| <b>Antigen:</b>          | Partial recombinant human Roundabout homolog 1 (amino acids 491-589) with a GST tag.   |
| <b>Clone:</b>            | 2G6  |
| <b>Other Names:</b>      | H-Robo-1; Deleted in U twenty twenty; ROBO1; DUTT1   |
| <b>Accession:</b>        | ROBO1_HUMAN  |
| <b>Produced in:</b>      | Mouse  |
| <b>Purity:</b>           | Protein G purified immunoglobulin  |
| <b>Applications:</b>     | This antibody is recommended for WB and sandwich ELISA. Biosensis recommends optimal dilutions/concentrations should be determined by the end user.  |
| <b>Specificity:</b>      | Specificity has been confirmed by WB and direct ELISA against the antigen.   |
| <b>Cross-reactivity:</b> | Human. Other species have not been tested.   |
| <b>Form:</b>             | Lyophilised from PBS pH 7.2  |
| <b>Reconstitution:</b>   | Reconstitute in 100 uL of sterile water. Centrifuge to remove any insoluble material.  |
| <b>Storage:</b>          | After reconstitution keep aliquots at -20C for higher stability or at 2-8C with an appropriate antibacterial agent. Glycerol (1:1) may be added for additional stability. Avoid repetitive freeze/thaw cycles.   |
| <b>Expiry Date:</b>      | 12 months after purchase   |



Western blot detection of GST tagged recombinant human Roundabout homolog 1. Note the GST tag alone is 26 kDa.

FOR RESEARCH USE ONLY