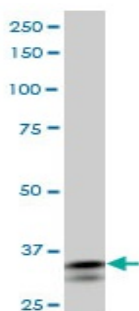


Mouse monoclonal antibody to human Short stature homeobox protein 2 [1D1]: IgG

Catalogue No.:	M-866-100
Description:	Short stature homeobox protein 2 may be a growth regulator and have a role in specifying neural systems involved in processing somatosensory information, as well as in face and body structure formation. It localises to the nucleus and in the developmental stage it is expressed during cranofacial development and in the heart. In adults it is expressed in heart, skeletal muscle, liver, lung, bone marrow fibroblast, pancreas and placenta. It belongs to the paired homeobox family where its members act as transcriptional regulators involved in pattern formation in both invertebrate and vertebrate species.
Batch No.:	See product label
Unit size:	100 ug
Antigen:	Partial recombinant human Short stature homeobox protein 2 (amino acids 177-205) with a GST tag.
Clone:	1D1
Other Names:	Paired-related homeobox protein SHOT; Homeobox protein Og12X; SHOX2; OG12X; SHOT
Accession:	SHOX2_HUMAN
Produced in:	Mouse
Purity:	Protein G purified immunoglobulin
Applications:	This antibody is recommended for WB and direct ELISA. Biosensis recommends optimal dilutions/concentrations should be determined by the end user.
Specificity:	Specificity has been confirmed by WB and direct ELISA against the antigen.
Cross-reactivity:	Human, mouse and rat. Other species have not been tested.
Form:	Lyophilised from PBS pH 7.2
Reconstitution:	Reconstitute in 100 uL of sterile water. Centrifuge to remove any insoluble material.
Storage:	After reconstitution keep aliquots at -20C for higher stability or at 2-8C with an appropriate antibacterial agent. Glycerol (1:1) may be added for additional stability. Avoid repetitive freeze/thaw cycles.
Expiry Date:	12 months after purchase



Western blot analysis on PC12 cell lysate using mouse monoclonal to human Short stature homeobox protein 2, catalogue number M-866-100.

FOR RESEARCH USE ONLY