



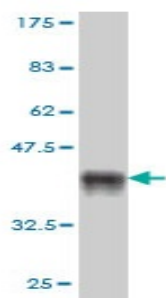
Mouse monoclonal antibody to human Single-minded homolog 2 [3E6] (426-525): IgG

Catalogue No.:	M-868-100
Description:	THIS PRODUCT HAS BEEN SUPERCEDED. PLEASE REFER TO THE "REPLACED BY" FIELD BELOW TO LOCATE THE CURRENT BIOSENSIS PRODUCT TO MEET YOUR RESEARCH NEEDS. Single-minded homolog 2 is a transcription factor that may be a master gene of CNS development in cooperation with Arnt. It may have pleiotropic effects in the tissues expressed during development. Efficient DNA binding requires dimerisation with another bHLH protein. It forms a heterodimer with ARNT.
Batch No.:	See product label
Unit size:	100 µg
Antigen:	Partial recombinant human Single-minded homolog 2 (amino acids 426-525) with a GST tag. Sequence of antigen (without GST tag) is ESSDLLYTPSYSLPFSYHYGHFPLDSHFSSKKPMLPAKFG QPQGSPCEVARFFLSTLPASGECQWHYANPLVPSSSSPAKNPPEPPANTARHSLVPSYE
Clone:	[3E6]
Other Names:	SIM2
Accession:	SIM2_HUMAN
Produced in:	Mouse
Purity:	Protein G purified immunoglobulin
Applications:	This antibody is recommended for WB and sandwich ELISA. Biosensis recommends optimal dilutions/concentrations should be determined by the end user.
Specificity:	Specificity has been confirmed by WB and direct ELISA against the antigen.
Cross-reactivity:	Human. Other species have not been tested.
Form:	Lyophilised from PBS pH 7.2
Reconstitution:	Reconstitute in 100 µl of sterile water. Centrifuge to remove any insoluble material.
Storage:	After reconstitution keep aliquots at -20°C for higher stability or at 4°C with an appropriate antibacterial agent. Glycerol (1:1) may be added for additional stability. Avoid repetitive freeze/thaw cycles.
Expiry Date:	12 months after purchase

FOR RESEARCH USE ONLY



Mouse monoclonal antibody to human Single-minded homolog 2 [3E6] (426-525): IgG



Western blot detection of GST tagged recombinant human Single-minded homolog 2. Note the GST tag alone is 26 kDa.

biosensis

FOR RESEARCH USE ONLY