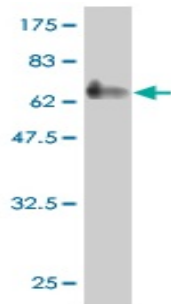


Mouse monoclonal antibody to human AP2-beta [3G5-1D11]: IgG

Catalogue No.:	M-872-100
Description:	AP2-beta is a sequence-specific DNA-binding protein that interacts with inducible viral and cellular enhancer elements to regulate transcription of selected genes during early development. AP-2 factors bind to the consensus sequence 5'-GCCNNNGGC-3'; and activate genes involved in large spectrum of important biological functions including proper eye, face, body wall, limb and neural tube development. They also suppress a number of genes. AP2-beta appears to be required for normal face and limb development and for proper terminal differentiation and function of renal tubular epithelia. Binds DNA as a dimer. It can form homodimers or heterodimers with other AP-2 family members. Defects in AP2-beta are the cause of Char syndrome (CHAR) which is characterised by patent ductus arteriosus (PDA), facial dysmorphism and hand anomalies.
Batch No.:	See product label
Unit size:	100 ug
Antigen:	Recombinant human AP2-beta (amino acids 12-460) with GST tag.
Clone:	3G5-1D11
Other Names:	Transcription factor AP2-beta; Activating enhancer-binding protein 2 beta; TFAP2B
Accession:	AP2B_HUMAN
Produced in:	Mouse
Purity:	Protein G purified immunoglobulin
Applications:	This antibody is recommended for WB and ELISA. Biosensis recommends optimal dilutions/concentrations should be determined by the end user.
Specificity:	Specificity has been confirmed by WB and direct ELISA against the antigen.
Cross-reactivity:	Human. Other species have not been tested.
Form:	Lyophilised from PBS pH 7.2
Reconstitution:	Reconstitute in 100 uL of sterile water. Centrifuge to remove any insoluble material.
Storage:	After reconstitution keep aliquots at -20C for higher stability or at 2-8C with an appropriate antibacterial agent. Glycerol (1:1) may be added for additional stability. Avoid repetitive freeze/thaw cycles.
Expiry Date:	12 months after purchase

FOR RESEARCH USE ONLY

Mouse monoclonal antibody to human AP2-beta [3G5-1D11]: IgG



Western blot detection of GST tagged recombinant human AP2-beta.

biosensis

FOR RESEARCH USE ONLY