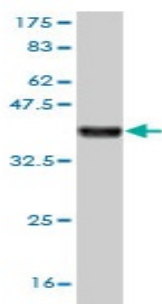




Mouse monoclonal antibody to human Semaphorin-7A [3D3]: IgG

Catalogue No.:	M-875-100
Description:	Semaphorin-7A is a membrane-bound semaphorin that associates with cell surfaces via a glycosylphosphatidylinositol (GPI) linkage. It is an 80-kDa glycoprotein expressed on activated lymphocytes and erythrocytes. It may play an important role in the nervous system and in modulating immune function. It is expressed in placenta, testis, ovary, spleen, brain, spinal cord, lung, heart, adrenal gland, lymph nodes, thymus, intestine and kidney.
Batch No.:	See product label
Unit size:	100 ug
Antigen:	Partial recombinant human Semaphorin-7A (amino acids 536-633) with a GST tag.
Clone:	3D3
Other Names:	Semaphorin-L; Sema L; Semaphorin-K1; Sema K1; John-Milton-Hargen human blood group Ag; JMH blood group antigen; CD108 antigen; CDw108; SEMA7A; CD108; SEMAL
Accession:	SEM7A_HUMAN
Produced in:	Mouse
Purity:	Protein G purified immunoglobulin
Applications:	This antibody is recommended for WB, and sandwich ELISA. Biosensis recommends optimal dilutions/concentrations should be determined by the end user.
Specificity:	Specificity has been confirmed by WB and direct ELISA against the antigen.
Cross-reactivity:	Human. Other species have not been tested.
Form:	Lyophilised from PBS pH 7.2
Reconstitution:	Reconstitute in 100 uL of sterile water. Centrifuge to remove any insoluble material.
Storage:	After reconstitution keep aliquots at -20C for higher stability or at 2-8C with an appropriate antibacterial agent. Glycerol (1:1) may be added for additional stability. Avoid repetitive freeze/thaw cycles.
Expiry Date:	12 months after purchase



Western blot detection of GST tagged recombinant human Semaphorin-7A. Note the GST tag alone is 26 kDa.

FOR RESEARCH USE ONLY