



## Mouse monoclonal antibody to human ATG5 [3D2]: IgG

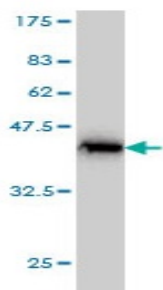
<b>Catalogue No.:</b>	M-881-100
<b>Description:</b>	Autophagy is a process of bulk protein degradation in which cytoplasmic components, including organelles, are enclosed in double-membrane structures called autophagosomes and delivered to lysosomes or vacuoles for degradation. ATG5 conjugates to ATG12 and associates with isolation membrane to form cup-shaped isolation membrane and autophagosome. The conjugate detaches from the membrane immediately before or after autophagosome formation is completed. ATG5 may also play an important role in the apoptotic process, possibly within the modified cytoskeleton. Its expression is a relatively late event in the apoptotic process, occurring downstream of caspase activity. It localise to the cytoplasm and it co-localise with nonmuscle actin. ATG5 is ubiquitously expressed. Its expression is dramatically increased in apoptotic cells. Conjugation to ATG12 is essential for autophagy but it is not required for association with isolation membrane.
<b>Batch No.:</b>	See product label
<b>Unit size:</b>	100 µg
<b>Antigen:</b>	Partial recombinant human ATG5 (176-275) with a GST tag.
<b>Clone:</b>	3D2
<b>Other Names:</b>	Autophagy protein 5; APG5-like; Apoptosis -specific protein; ATG5; APG5L; ASP; APG5
<b>Accession:</b>	ATG5_HUMAN
<b>Produced in:</b>	Mouse
<b>Purity:</b>	Protein G purified immunoglobulin
<b>Applications:</b>	This antibody is recommended for WB, and sandwich ELISA. Biosensis recommends optimal dilutions/concentrations should be determined by the end user.
<b>Specificity:</b>	Specificity has been confirmed by WB and direct ELISA against the antigen.
<b>Cross-reactivity:</b>	Human. Other species have not been tested.
<b>Form:</b>	Lyophilised from PBS pH 7.2
<b>Reconstitution:</b>	Reconstitute in 100 µl of sterile water. Centrifuge to remove any insoluble material.
<b>Storage:</b>	After reconstitution keep aliquots at -20°C for higher stability or at 4°C with an appropriate antibacterial agent. Glycerol (1:1) may be added for additional stability. Avoid repetitive freeze/thaw cycles.
<b>Expiry Date:</b>	12 months after purchase

---

FOR RESEARCH USE ONLY



## Mouse monoclonal antibody to human ATG5 [3D2]: IgG



Western blot detection of GST tagged recombinant human ATG5. Note the GST tag alone is 26 kDa.

biosensis

---

FOR RESEARCH USE ONLY