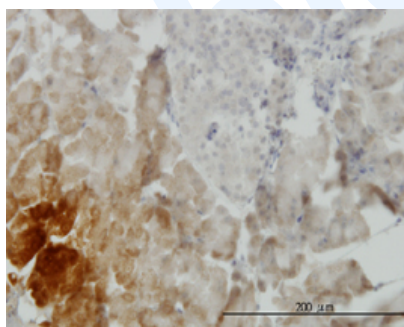


## Mouse monoclonal antibody to human GDF-11 [3G6]: IgG

<b>Catalogue No.:</b>	M-885-100
<b>Description:</b>	GDF-11 is a secreted signal that acts globally to specify positional identity along the anterior/posterior axis during development. It plays critical roles in patterning both mesodermal and neural tissues and in establishing the skeletal pattern. It exists as a disulfide-linked homodimer. It belongs to the TGF-beta family.
<b>Batch No.:</b>	See product label
<b>Unit size:</b>	100 ug
<b>Antigen:</b>	Partial recombinant human GDF-11 (310-407) with a GST tag.
<b>Clone:</b>	3G6
<b>Other Names:</b>	Growth/differentiation factor 11; Bone morphogenetic protein 11; GDF11; BMP11
<b>Accession:</b>	GDF11_HUMAN
<b>Produced in:</b>	Mouse
<b>Purity:</b>	Protein G purified immunoglobulin
<b>Applications:</b>	This antibody is recommended for IHC, and sandwich ELISA. Biosensis recommends optimal dilutions/concentrations should be determined by the end user.
<b>Specificity:</b>	Specificity has been confirmed by direct ELISA against the antigen.
<b>Cross-reactivity:</b>	Human. Other species have not been tested.
<b>Form:</b>	Lyophilised from PBS pH 7.2
<b>Reconstitution:</b>	Reconstitute in 100 uL of sterile water. Centrifuge to remove any insoluble material.
<b>Storage:</b>	After reconstitution keep aliquots at -20C for higher stability or at 2-8C with an appropriate antibacterial agent. Glycerol (1:1) may be added for additional stability. Avoid repetitive freeze/thaw cycles.
<b>Expiry Date:</b>	12 months after purchase



Immunohistochemical detection of GDF-11 on formalin fixed, paraffin-embedded, human pancreas. Anti-GDF-11 primary antibody, catalogue number M-885-100, was used at a concentration of 3 µg/ml. Image 2:

---

FOR RESEARCH USE ONLY