



## Mouse monoclonal antibody to human Semaphorin-4D [3B4]: IgG

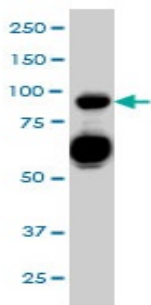
<b>Catalogue No.:</b>	M-888-100
<b>Description:</b>	Semaphorin-4D is an 863-amino acid polypeptide containing a secretory signal sequence, a single transmembrane domain, an immunoglobulin (Ig)-like domain, and a conserved 500-amino acid sema domain. It was first identified as a cell surface protein of resting T cells and was the first semaphorin believed to be involved in the immune system. In addition to playing a functional role in the immune system it may also act in the nervous system. It induces B-cells to aggregate and improves their viability in vitro. It is strongly expressed in skeletal muscle, peripheral blood lymphocytes, spleen and thymus. It is expressed at lower levels in testes, brain, kidney, small intestine, prostate, heart, placenta, lung and pancreas, but not in colon or liver.
<b>Batch No.:</b>	See product label
<b>Unit size:</b>	100 ug
<b>Antigen:</b>	Partial recombinant human Semaphorin-4D (115-224) with a GST tag.
<b>Clone:</b>	3B4
<b>Other Names:</b>	BB18; A8; GR3; CD100 antigen; SEMA4D; CD100; SEMAJ
<b>Accession:</b>	SEM4D_HUMAN
<b>Produced in:</b>	Mouse
<b>Purity:</b>	Protein G purified immunoglobulin
<b>Applications:</b>	This antibody is recommended for WB, and sandwich ELISA. Biosensis recommends optimal dilutions/concentrations should be determined by the end user.
<b>Specificity:</b>	Specificity has been confirmed by WB and direct ELISA against the antigen.
<b>Cross-reactivity:</b>	Human. Other species have not been tested.
<b>Form:</b>	Lyophilised from PBS pH 7.2
<b>Reconstitution:</b>	Reconstitute in 100 uL of sterile water. Centrifuge to remove any insoluble material.
<b>Storage:</b>	After reconstitution keep aliquots at -20C for higher stability or at 2-8C with an appropriate antibacterial agent. Glycerol (1:1) may be added for additional stability. Avoid repetitive freeze/thaw cycles.
<b>Expiry Date:</b>	12 months after purchase

---

FOR RESEARCH USE ONLY



## Mouse monoclonal antibody to human Semaphorin-4D [3B4]: IgG



Western blot detection of human Semaphorin-4D expression in human promyelocytic leukemia whole cell lysate.

biosensis

---

FOR RESEARCH USE ONLY