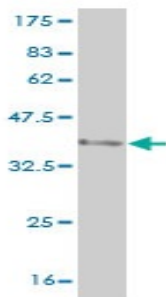


## Mouse monoclonal antibody to human SEMA4B [4B2]: IgG

<b>Catalogue No.:</b>	M-889-100
<b>Description:</b>	SEMA4B is a 837 amino acid polypeptide that has an estimated molecular weight of 92.7 kDa. It contains a Sema domain which occurs in semaphorins, which are a large family of secreted and transmembrane proteins, some of which function as repellent signals during axon guidance. It also contains a a PSI domain (plexin repeat). This is a cysteine rich repeat found in several different extracellular receptors.
<b>Batch No.:</b>	See product label
<b>Unit size:</b>	100 ug
<b>Antigen:</b>	Partial recombinant human SEMA4B (592-659) with a GST tag.
<b>Clone:</b>	4B2
<b>Other Names:</b>	Sema domain; immunoglobulin domain (Ig); transmembrane domain (TM) and short cytoplasmic domain; (Semaphorin) 4B
<b>Accession:</b>	Q2NL81_HUMAN
<b>Produced in:</b>	Mouse
<b>Purity:</b>	Protein G purified immunoglobulin
<b>Applications:</b>	This antibody is recommended for WB and sandwich ELISA. Biosensis recommends optimal dilutions/concentrations should be determined by the end user.
<b>Specificity:</b>	Specificity has been confirmed by WB and direct ELISA against the antigen.
<b>Cross-reactivity:</b>	Human. Other species have not been tested.
<b>Form:</b>	Lyophilised from PBS pH 7.2
<b>Reconstitution:</b>	Reconstitute in 100 uL of sterile water. Centrifuge to remove any insoluble material.
<b>Storage:</b>	After reconstitution keep aliquots at -20C for higher stability or at 2-8C with an appropriate antibacterial agent. Glycerol (1:1) may be added for additional stability. Avoid repetitive freeze/thaw cycles.
<b>Expiry Date:</b>	12 months after purchase



Western blot detection of GST tagged recombinant human SEMA4B.

FOR RESEARCH USE ONLY