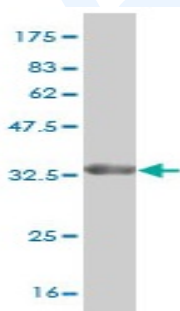




## Mouse monoclonal antibody to human Stathmin-2 [1C6]: IgG

<b>Catalogue No.:</b>	M-890-100
<b>Description:</b>	Stathmin-2 is a neuronal growth-associated protein that shares significant amino acid sequence similarity with the phosphoprotein stathmin. It may play a role in neuronal differentiation, and in modulating membrane interaction with the cytoskeleton during neurite outgrowth. It is neuron specific and belongs to the stathmin family.
<b>Batch No.:</b>	See product label
<b>Unit size:</b>	100 ug
<b>Antigen:</b>	Partial recombinant human Stathmin-2 (1-90) with a GST tag.
<b>Clone:</b>	1C6
<b>Other Names:</b>	Superior cervical ganglion-10 protein; Protein SCG10; STMN2; SCG10; SCGN10
<b>Accession:</b>	STMN2_HUMAN
<b>Produced in:</b>	Mouse
<b>Purity:</b>	Protein G purified immunoglobulin
<b>Applications:</b>	This antibody is recommended for WB and sandwich ELISA. Biosensis recommends optimal dilutions/concentrations should be determined by the end user.
<b>Specificity:</b>	Specificity has been confirmed by WB and direct ELISA against the antigen.
<b>Cross-reactivity:</b>	Human. Other species have not been tested.
<b>Form:</b>	Lyophilised from PBS pH 7.2
<b>Reconstitution:</b>	Reconstitute in 100 uL of sterile water. Centrifuge to remove any insoluble material.
<b>Storage:</b>	After reconstitution keep aliquots at -20C for higher stability or at 2-8C with an appropriate antibacterial agent. Glycerol (1:1) may be added for additional stability. Avoid repetitive freeze/thaw cycles.
<b>Expiry Date:</b>	12 months after purchase



Western blot detection of GST tagged recombinant human Stathmin-2.

FOR RESEARCH USE ONLY