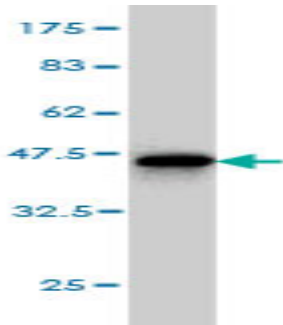


Mouse monoclonal antibody to human Gremlin-1 [4C2]: IgG

Catalogue No.:	M-877-100
Description:	Gremlin-1 is a secreted cytokine that may play a role during carcinogenesis and metanephric kidney organogenesis, as a BMP antagonist required for early limb outgrowth and patterning in maintaining the FGF4-SHH feedback loop. It down-regulates the BMP4 signaling in a dose-dependent manner. It also acts as inhibitor of monocyte chemotaxis. It is highly expressed in small intestine, fetal brain and colon. Weakly expressed in brain, ovary, prostate, pancreas and skeletal muscle. In brain found in the region localized around the internal capsule in the large subcortical nuclei, including caudate, putamen, substantia nigra, thalamus and subthalamus. Predominantly expressed in normal cells including neurons, astrocytes and fibroblasts. Gremlin-1 is induced through TGF-beta 1-mediated pathways in Mesangial cell and it is down-regulated in tumor cell lines.
Batch No.:	See product label
Unit size:	100 ug
Antigen:	Partial recombinant human Gremlin-1 (75-184) with a GST tag.
Isotype:	IgG2a Kappa
Clone:	4C2
Other Names:	Cysteine knot superfamily 1 BMP antagonist 1; Increased in high glucose protein 2; IHG-2; Down-regulated in Mos-transformed cells protein; DAN domain family member 2; Cell proliferation-inducing gene 2 protein GREM1; CKTSF1B1; DAND2; DRM
Accession:	GREM1_HUMAN
Produced in:	Mouse
Purity:	Protein G purified immunoglobulin
Applications:	This antibody is recommended for WB and sandwich ELISA. Biosensis recommends optimal dilutions/concentrations should be determined by the end user.
Specificity:	Specificity has been confirmed by WB and direct ELISA against the antigen.
Cross-reactivity:	Human;
Form:	Lyophilised from PBS pH 7.4
Reconstitution:	Reconstitute in 100 uL of sterile water. Centrifuge to remove any insoluble material.
Storage:	Store lyophilized antibody at 2-8C.. After reconstitution keep aliquots at -20C for higher stability or at 2-8C with an appropriate antibacterial agent. Glycerol (1:1) may be added for additional stability. Avoid repetitive freeze/thaw cycles.
Expiry Date:	12 months after purchase

FOR RESEARCH USE ONLY

Mouse monoclonal antibody to human Gremlin-1 [4C2]: IgG



Western blot detection of GST tagged recombinant human Gremlin-1.
Note the GST tag alone is 26 kDa.

biosensis

FOR RESEARCH USE ONLY