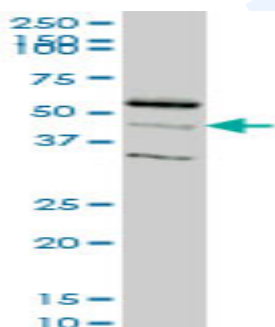




## Mouse monoclonal antibody to human RAPGEFL1 [4G2]: IgG

<b>Catalogue No.:</b>	M-897-100
<b>Description:</b>	RAPGEFL1 is a 456 amino acid protein with an estimated molecular weight of ~52 kDa. It is a guanine-nucleotide releasing factor and contains one Ras-GEF domain.
<b>Batch No.:</b>	See product label
<b>Unit size:</b>	100 µg
<b>Antigen:</b>	Partial recombinant human RAPGELF1 (1-100) with a GST tag.
<b>Clone:</b>	4G2
<b>Other Names:</b>	Rap guanine nucleotide exchange factor-like protein 1; Link guanine nucleotide exchange factor II
<b>Accession:</b>	Q9UHV5_HUMAN
<b>Produced in:</b>	Mouse
<b>Purity:</b>	Protein G purified immunoglobulin
<b>Applications:</b>	This antibody is recommended for WB, and sandwich ELISA. Biosensis recommends optimal dilutions/concentrations should be determined by the end user.
<b>Specificity:</b>	Specificity has been confirmed by WB and direct ELISA against the antigen.
<b>Cross-reactivity:</b>	Human and mouse. Other species have not been tested.
<b>Form:</b>	Lyophilised from PBS pH 7.2
<b>Reconstitution:</b>	Reconstitute in 100 µL of sterile water. Centrifuge to remove any insoluble material.
<b>Storage:</b>	After reconstitution keep aliquots at -20C for higher stability or at 2-8C with an appropriate antibacterial agent. Glycerol (1:1) may be added for additional stability. Avoid repetitive freeze/thaw cycles.
<b>Expiry Date:</b>	12 months after purchase



Western blot detection of RAPGEFL1 expression in human neuroblastoma cell lysate.

FOR RESEARCH USE ONLY