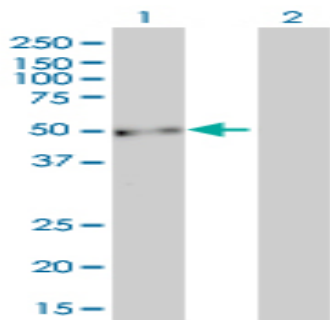


Mouse monoclonal antibody to human Ena/VASP-like protein [5G1]: IgG

Catalogue No.:	M-898-100
Description:	Ena/VASP proteins are actin-associated proteins involved in a range of processes dependent on cytoskeleton remodeling and cell polarity such as axon guidance and lamellipodial and filopodial dynamics in migrating cells. Ena/VASP-like protein enhances actin nucleation and polymerisation. It is required to transform actin polymerisation into active movement for the propulsive force of <i>Listeria monocytogenes</i> . It exists as a homotetramer which localises to the cytoplasm, cytoskeleton and cell projection. There are two name isoforms produced by alternative splicing.
Batch No.:	See product label
Unit size:	100 ug
Antigen:	Partial recombinant human Ena/VASP-like protein (309-419) with a GST tag.
Clone:	5G1
Other Names:	Ena/vasodilator-stimulated phosphoprotein-like; EVL; RNB6
Accession:	EVL_HUMAN
Produced in:	Mouse
Purity:	Protein G purified immunoglobulin
Applications:	This antibody is recommended for WB, and sandwich ELISA. Biosensis recommends optimal dilutions/concentrations should be determined by the end user.
Specificity:	Specificity has been confirmed by WB and direct ELISA against the antigen.
Cross-reactivity:	Human. Other species have not been tested.
Form:	Lyophilised from PBS pH 7.2
Reconstitution:	Reconstitute in 100 uL of sterile water. Centrifuge to remove any insoluble material.
Storage:	After reconstitution keep aliquots at -20C for higher stability or at 2-8C with an appropriate antibacterial agent. Glycerol (1:1) may be added for additional stability. Avoid repetitive freeze/thaw cycles.
Expiry Date:	12 months after purchase



Western blot detection of Ena/VASP-like protein expression in Transfected 293T cell lysate. This antibody detects a band of molecular weight 45 kDa in Ena/VASP-like protein transfected lysate (lane 1) and is negative against non-transfected 293T lysate.

FOR RESEARCH USE ONLY