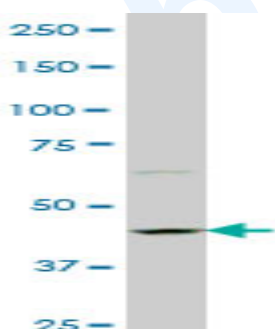




Mouse monoclonal antibody to human Protein phosphatase 1, regulatory subunit 9A [6A10]: IgG

Catalogue No.:	M-901-100
Description:	Protein phosphatase 1, regulatory subunit 9A is 132 amino acid protein with an estimated molecular weight of ~148 kDa. It is thought to be involved in neurite formation.
Batch No.:	See product label
Unit size:	100 ug
Antigen:	Partial recombinant human Protein phosphatase 1, regulatory subunit 9A [1090-1188) with a GST tag.
Clone:	6A10
Other Names:	HCG1741805 isoform CRA_c; PPP1R9A; hCG_1741805; tcag7.281
Accession:	A4D1I0_HUMAN
Produced in:	Mouse
Purity:	Protein G purified immunoglobulin
Applications:	This antibody is recommended for WB and ELISA. Biosensis recommends optimal dilutions/concentrations should be determined by the end user.
Specificity:	Specificity has been confirmed by WB and ELISA against the antigen.
Cross-reactivity:	Human, mouse and rat. Other species have not been tested.
Form:	Lyophilised from PBS pH 7.2
Reconstitution:	Reconstitute in 100 uL of sterile water. Centrifuge to remove any insoluble material.
Storage:	After reconstitution keep aliquots at -20C for higher stability or at 2-8C with an appropriate antibacterial agent. Glycerol (1:1) may be added for additional stability. Avoid repetitive freeze/thaw cycles.
Expiry Date:	12 months after purchase



Western blot detection of Protein phosphatase 1, regulatory subunit 9A expression in PC-12 cell lysate.

FOR RESEARCH USE ONLY