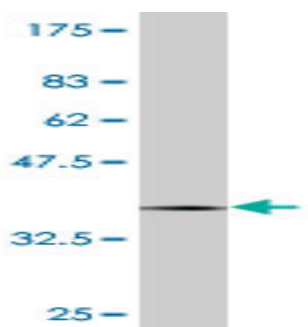


Mouse monoclonal antibody to human Protocadherin beta-12 [1D11]: IgG

Catalogue No.:	M-903-100
Description:	Protocadherin beta-12 is a member of the protocadherin beta gene cluster which contains 16 genes and 3 pseudogenes each encoding 6 extracellular cadherin domains and a cytoplasmic tail that deviates from others in the cadherin superfamily. Protocadherin beta-12 is a potential calcium-dependent cell adhesion protein. It may be involved in the establishment and maintenance of specific neuronal connections in the brain. It is a single-pass type I membrane protein which contains 6 cadherin domains.
Batch No.:	See product label
Unit size:	100 ug
Antigen:	Partial recombinant human Protocadherin beta-12 [301-400) with a GST tag.
Clone:	1D11
Other Names:	PCDH-beta-12; PCDHB12
Accession:	PCDBC_HUMAN
Produced in:	Mouse
Purity:	Protein G purified immunoglobulin
Applications:	This antibody is recommended for WB and sandwich ELISA. Biosensis recommends optimal dilutions/concentrations should be determined by the end user.
Specificity:	Specificity has been confirmed by WB and ELISA against the antigen.
Cross-reactivity:	Human. Other species have not been tested.
Form:	Lyophilised from PBS pH 7.2
Reconstitution:	Reconstitute in 100 uL of sterile water. Centrifuge to remove any insoluble material.
Storage:	After reconstitution keep aliquots at -20C for higher stability or at 2-8C with an appropriate antibacterial agent. Glycerol (1:1) may be added for additional stability. Avoid repetitive freeze/thaw cycles.
Expiry Date:	12 months after purchase



Western blot detection of GST tagged recombinant human Protocadherin beta-12. Note the GST tag alone is 26 kDa.

FOR RESEARCH USE ONLY