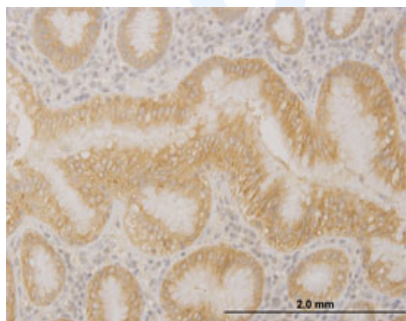


Mouse monoclonal antibody to human Protocadherin alpha 10 [1F6]: IgG

Catalogue No.:	M-905-100
Description:	Protocadherin alpha-10 is 1 of 15 tandemly arranged genes within the PCDHA gene cluster. These 15 genes function as 'variable' exons that are individually spliced to a downstream constant region to form distinct PCDHA transcripts. They encode cadherin-like cell surface proteins that are expressed in neurons and are present at synaptic junctions.
Batch No.:	See product label
Unit size:	100 ug
Antigen:	Partial recombinant human Protocadherin alpha 10 [182-290] with a GST tag.
Clone:	1F6
Other Names:	PCDH-alpha-10; PCDHA10; CNRS8
Accession:	PCDAA_HUMAN
Produced in:	Mouse
Purity:	Protein G purified immunoglobulin
Applications:	This antibody is recommended for IHC, WB and ELISA. Biosensis recommends optimal dilutions/concentrations should be determined by the end user.
Specificity:	Specificity has been confirmed by WB and ELISA against the antigen.
Cross-reactivity:	Human. Other species have not been tested.
Form:	Lyophilised from PBS pH 7.2
Reconstitution:	Reconstitute in 100 uL of sterile water. Centrifuge to remove any insoluble material.
Storage:	After reconstitution keep aliquots at -20C for higher stability or at 2-8C with an appropriate antibacterial agent. Glycerol (1:1) may be added for additional stability. Avoid repetitive freeze/thaw cycles.
Expiry Date:	12 months after purchase



Immunohistochemical detection of Protocadherin alpha-10 on formalin fixed, paraffin-embedded, human stomach tissue. Anti-Protocadherin monoclonal antibody, catalogue number M-895-100, was used at a concentration of 3 µg/ml.

FOR RESEARCH USE ONLY