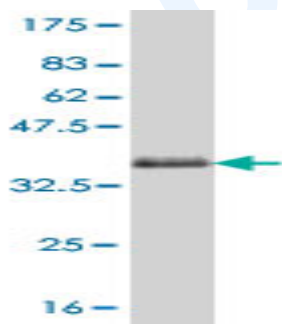


## Mouse monoclonal antibody to human Protocadherin alpha 1 [3A3]: IgG

<b>Catalogue No.:</b>	M-907-100
<b>Description:</b>	Protocadherin alpha-1 is 1 of 15 tandemly arranged genes within the PCDHA gene cluster. These 15 genes function as &#39;variable&#39; exons that are individually spliced to a downstream constant region to form distinct PCDHA transcripts. They encode cadherin-like cell surface proteins that are expressed in neurons and are present at synaptic junctions.
<b>Batch No.:</b>	See product label
<b>Unit size:</b>	100 ug
<b>Antigen:</b>	Partial recombinant human Protocadherin alpha 1 [243-332 with a GST tag.
<b>Clone:</b>	3A3
<b>Other Names:</b>	PCDH-alpha-1; PCDHA1
<b>Accession:</b>	PCDA1_HUMAN
<b>Produced in:</b>	Mouse
<b>Purity:</b>	Protein G purified immunoglobulin
<b>Applications:</b>	This antibody is recommended for WB and ELISA. Biosensis recommends optimal dilutions/concentrations should be determined by the end user.
<b>Specificity:</b>	Specificity has been confirmed by WB and ELISA against the antigen.
<b>Cross-reactivity:</b>	Human. Other species have not been tested.
<b>Form:</b>	Lyophilised from PBS pH 7.2
<b>Reconstitution:</b>	Reconstitute in 100 uL of sterile water. Centrifuge to remove any insoluble material.
<b>Storage:</b>	After reconstitution keep aliquots at -20C for higher stability or at 2-8C with an appropriate antibacterial agent. Glycerol (1:1) may be added for additional stability. Avoid repetitive freeze/thaw cycles.
<b>Expiry Date:</b>	12 months after purchase



Western blot detection of GST tagged recombinant human Protocadherin alpha-1. Note the GST tag alone is 26 kDa.

FOR RESEARCH USE ONLY