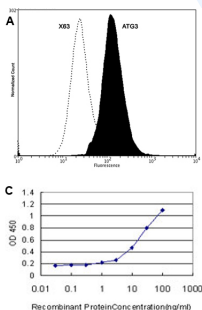


Mouse monoclonal antibody to human ATG3 [1F7]: IgG

| | |
|--------------------------|---|
| Catalogue No.: | M-908-100 |
| Description: | Autophagy is a process of bulk degradation of cytoplasmic components by the lysosome or vacuole. ATG3 is an E2-like protein-conjugating enzyme for GABARAPL1, GABARAPL2 and MAPLC3 binding them to PE. ATG3 forms an E1-E2 complex with ATG7 and cross-talks with the ATG12 conjugation system. ATG3 is a cytoplasmic protein that is widely expressed with highest expression in heart, skeletal muscle, kidney, liver and placenta. |
| Batch No.: | See product label |
| Unit size: | 100 ug |
| Antigen: | Partial recombinant human ATG3 [1-100] with a GST tag. |
| Isotype: | IgG2b, kappa |
| Clone: | 1F7 |
| Other Names: | Autophagy-related protein 3; APG3-like; hApG3; Protein PC3-96; ATG3; APG3; APG3L |
| Accession: | ATG3_HUMAN |
| Produced in: | Mouse |
| Purity: | Protein G purified immunoglobulin |
| Applications: | This antibody is recommended for WB, sandwich ELISA and Flow Cytometry (2ug/10 ⁶ cells). Biosensis recommends optimal dilutions/concentrations should be determined by the end user. |
| Specificity: | Specificity has been confirmed by WB and ELISA against the antigen. |
| Cross-reactivity: | Human. Other species have not been tested. |
| Form: | Lyophilised from PBS pH 7.2 |
| Reconstitution: | Reconstitute in 100 uL of sterile water. Centrifuge to remove any insoluble material. |
| Storage: | After reconstitution keep aliquots at -20C for higher stability or at 2-8C with an appropriate antibacterial agent. Glycerol (1:1) may be added for additional stability. Avoid repetitive freeze/thaw cycles. |
| Expiry Date: | 12 months after purchase |



A: Flow Cytometry analysis of ATG3 expression in SH-SY5Y cells. Fixing and permeabilization of cells: absolute methanol and 0.1% Tween-20 in PBS; Primary antibody: Mouse Monoclonal antibody to ATG3 (cat # M-908-100, 2 μ g per \sim 10⁶ cells) for 30 minutes at room temperature; Secondary antibody: Goat anti-mouse PE (1:100 dilution) with incubation for 20 minutes in dark at room temperature. Non-specific Control IgG, clone X63 (cat # M-1249-200) was used as negative control under same conditions. Data and results were generated using Orflo MoxiflowTM instrument and protocols. B: Western blot detection of ATG3 expression in Jurkat cell lysate. C: Sandwich ELISA using the anti-ATG3 monoclonal antibody as capture antibody. The detection limit for GST-tagged recombinant ATG3 is 1 ng/mL.

FOR RESEARCH USE ONLY