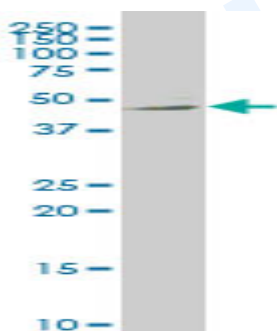


## Mouse monoclonal antibody to human Netrin-G2 [4F11]: IgG

<b>Catalogue No.:</b>	M-909-100
<b>Description:</b>	Netrin-G2 promotes neurite outgrowth of both axons and dendrites. It is a cell membrane lipid anchor protein that is N-glycosylated.
<b>Batch No.:</b>	See product label
<b>Unit size:</b>	100 µg
<b>Antigen:</b>	Partial recombinant human Netrin-G2 [21-119] with a GST tag.
<b>Clone:</b>	4F11
<b>Other Names:</b>	Laminet-2; NTNG2; KIAA1857; LMNT2
<b>Accession:</b>	NTNG2_HUMAN
<b>Produced in:</b>	Mouse
<b>Purity:</b>	Protein G purified immunoglobulin
<b>Applications:</b>	This antibody is recommended for WB and sandwich ELISA. Biosensis recommends optimal dilutions/concentrations should be determined by the end user.
<b>Specificity:</b>	Specificity has been confirmed by WB and ELISA against the antigen.
<b>Cross-reactivity:</b>	Human. Other species have not been tested.
<b>Form:</b>	Lyophilised from PBS pH 7.2
<b>Reconstitution:</b>	Reconstitute in 100 µL of sterile water. Centrifuge to remove any insoluble material.
<b>Storage:</b>	After reconstitution keep aliquots at -20C for higher stability or at 2-8C with an appropriate antibacterial agent. Glycerol (1:1) may be added for additional stability. Avoid repetitive freeze/thaw cycles.
<b>Expiry Date:</b>	12 months after purchase



Western blot detection of Netrin-G2 expression in HeLa cell lysate.

FOR RESEARCH USE ONLY