



## Mouse monoclonal antibody to human CD316 antigen [1E4]: IgG

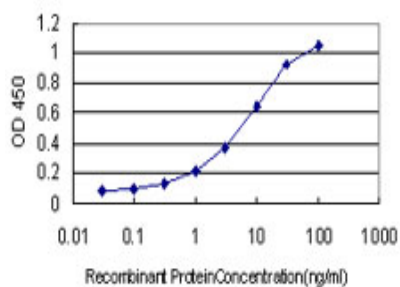
<b>Catalogue No.:</b>	M-911-100
<b>Description:</b>	CD316 antigen forms highly proximal, specific, and stoichiometric complexes with CD81 and CD9. It may play a key role in the diverse functions of CD81 and CD9 such as oocytes fertilisation or hepatitis C virus function. It may regulate proliferation and differentiation of keratinocytes and may negatively regulate cell motility. It may also participate in the regulation of neurite outgrowth and maintenance of the neural network in the adult brain. CD316 antigen is a transmembrane protein that is expressed in brain, kidney, testis, liver and placenta with moderate expression in all other tissues. It is detected on a majority of B-cells, T-cells and natural killer cells but not on monocytes, polynuclear cells and platelets.
<b>Batch No.:</b>	See product label
<b>Unit size:</b>	100 ug
<b>Antigen:</b>	Partial recombinant human CD316 antigen [349-451], with a GST tag.
<b>Clone:</b>	[1E4]
<b>Other Names:</b>	Immunoglobulin superfamily member 8; CD81 partner 3; Glu-Trp-Ile EWI motif-containing protein 2; EWI-2; Keratinocytes-associated transmembrane protein 4; KCT-4; LIR-D1; IGSF8; CD81P3; EWI2; KCT4
<b>Accession:</b>	IGSF8_HUMAN
<b>Produced in:</b>	Mouse
<b>Purity:</b>	Protein G purified immunoglobulin
<b>Applications:</b>	This antibody is recommended for sandwich ELISA. Biosensis recommends optimal dilutions/concentrations should be determined by the end user.
<b>Specificity:</b>	Specificity has been confirmed by ELISA against the antigen.
<b>Cross-reactivity:</b>	Human. Other species have not been tested.
<b>Form:</b>	Lyophilised from PBS pH 7.2
<b>Reconstitution:</b>	Reconstitute in 100 uL of sterile water. Centrifuge to remove any insoluble material.
<b>Storage:</b>	After reconstitution keep aliquots at -20C for higher stability or at 2-8C with an appropriate antibacterial agent. Glycerol (1:1) may be added for additional stability. Avoid repetitive freeze/thaw cycles.
<b>Expiry Date:</b>	12 months after purchase

---

FOR RESEARCH USE ONLY



## Mouse monoclonal antibody to human CD316 antigen [1E4]: IgG



Sandwich ELISA using the anti-CD316 antigen monoclonal antibody as capture antibody. The detection limit for GST-tagged recombinant protein is 0.1 ng/ml.

biosensis

---

FOR RESEARCH USE ONLY