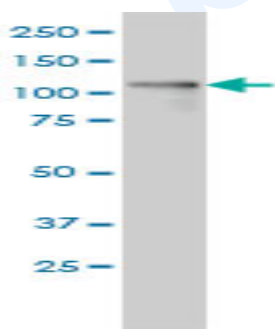


## Mouse monoclonal antibody to human Polycystin-1L2 [3F6]: IgG

<b>Catalogue No.:</b>	M-912-200
<b>Description:</b>	Polycystin-1L2 may function as an ion-channel regulator and as a G-protein-coupled receptor. It is a multi-pass transmembrane protein that is expressed in all tissues tested including brain, placenta, mammary gland, testis, lung and liver. The highest expression is in skeletal muscle. During development it is expressed in fetal heart. It belongs to the polycystin family. There are 7 named isoforms produced by alternative splicing.
<b>Batch No.:</b>	See product label
<b>Unit size:</b>	200 ug
<b>Antigen:</b>	Recombinant human Polycystin-1L2, isoform 4 [1-306], with a GST tag.
<b>Clone:</b>	3F6
<b>Other Names:</b>	Polycystic kidney disease protein 1-like 2; PC1-like 2 protein; PKD1L2; KIAA1879; PC1L2
<b>Accession:</b>	PK1L2_HUMAN
<b>Produced in:</b>	Mouse
<b>Purity:</b>	Protein G purified immunoglobulin
<b>Applications:</b>	This antibody is recommended for WB and sandwich ELISA. Biosensis recommends optimal dilutions/concentrations should be determined by the end user.
<b>Specificity:</b>	Specificity has been confirmed by WB and ELISA against the antigen.
<b>Cross-reactivity:</b>	Human. Other species have not been tested.
<b>Form:</b>	Lyophilised from PBS pH 7.2
<b>Reconstitution:</b>	Reconstitute in 200 uL of sterile water. Centrifuge to remove any insoluble material.
<b>Storage:</b>	After reconstitution keep aliquots at -20C for higher stability or at 2-8C with an appropriate antibacterial agent. Glycerol (1:1) may be added for additional stability. Avoid repetitive freeze/thaw cycles.
<b>Expiry Date:</b>	12 months after purchase



Western blot detection of human Polycystin-1L2 in HeLa cell lysate.

FOR RESEARCH USE ONLY