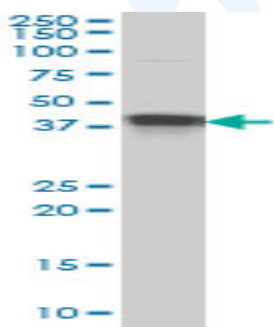




Mouse monoclonal antibody to human MBNL1 protein [1D11]: IgG

Catalogue No.:	M-913-100
Description:	MBNL1 protein is a 343 amino acid peptide with an estimated molecular weight of 36.5 kDa. It binds to CUG triplet repeat expansion dsRNA.
Batch No.:	See product label
Unit size:	100 ug
Antigen:	Recombinant human MBNL1 protein [1-343], with a GST tag.
Isotype:	IgG1 Kappa
Clone:	1D11
Other Names:	Muscleblind-like (Drosophila); isoform CRA_f; MBNL1
Accession:	Q86VM6_HUMAN
Produced in:	Mouse
Purity:	Protein G purified immunoglobulin
Applications:	This antibody is recommended for WB and ELISA. Biosensis recommends optimal dilutions/concentrations should be determined by the end user.
Specificity:	Specificity has been confirmed by WB and ELISA against the antigen.
Cross-reactivity:	Human. Other species have not been tested.
Form:	Lyophilised from PBS pH 7.4
Reconstitution:	Reconstitute in 100 uL of sterile water. Centrifuge to remove any insoluble material.
Storage:	12 months at -20C (Lyophilised). After reconstitution keep aliquots at -20C for higher stability or at 2-8C with an appropriate antibacterial agent. Glycerol (1:1) may be added for additional stability. Avoid repetitive freeze/thaw cycles.
Expiry Date:	12 months after purchase



Western blot detection of human MBNL1 protein in HeLa S3 nuclear extract lysate.

FOR RESEARCH USE ONLY