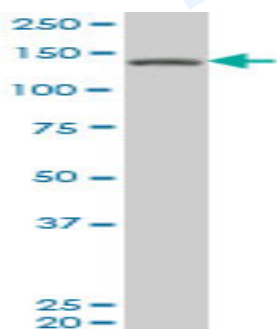


Mouse monoclonal antibody to human RET protein [1C6]: IgG

Catalogue No.:	M-918-100
Description:	RET protein is a member of the cadherin superfamily. It is one of the receptor tyrosine kinases, which are cell-surface molecules that transduce signals for cell growth and differentiation. RET protein plays a crucial role in neural crest development, and it can undergo oncogenic activation in vivo and in vitro by cytogenetic rearrangement. Mutations in RET protein are associated with the disorders multiple endocrine neoplasia, type IIA, multiple endocrine neoplasia, type IIB, Hirschsprung disease, and medullary thyroid carcinoma.
Batch No.:	See product label
Unit size:	100 ug
Antigen:	Partial recombinant human RET protein [361-458] with a GST tag.
Isotype:	IgG2a Kappa
Clone:	1C6
Other Names:	RET
Accession:	Q9BTX6_HUMAN
Produced in:	Mouse
Purity:	Protein G purified immunoglobulin
Applications:	This antibody is recommended for WB and ELISA. Biosensis recommends optimal dilutions/concentrations should be determined by the end user.
Specificity:	Specificity has been confirmed by direct ELISA against the antigen.
Cross-reactivity:	Human.
Form:	Lyophilised from PBS pH 7.4
Reconstitution:	Reconstitute in 100 uL of sterile water. Centrifuge to remove any insoluble material.
Storage:	After reconstitution keep aliquots at -20C for higher stability or at 2-8C with an appropriate antibacterial agent. Glycerol (1:1) may be added for additional stability. Avoid repetitive freeze/thaw cycles.
Expiry Date:	12 months after purchase



Western blot detection of human RET protein expression in human breast adenocarcinoma whole cell lysate.

FOR RESEARCH USE ONLY