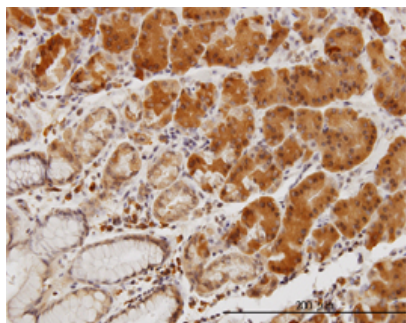




Mouse monoclonal antibody to human LIMK-1 [1A8]: IgG

Catalogue No.:	M-844-100
Description:	LIMK-1 belongs to a small subfamily of LIM proteins with a unique combination of 2 N-terminal LIM motifs and a C-terminal protein kinase domain. LIMK1 regulates actin filament dynamics. It phosphorylates and inactivates the actin binding/ depolymerising factor cofilin, consequently stabilising the actin cytoskeleton. It may also be involved in brain development. LIMK-1 localises to the cytoplasm and is highly expressed in both the adult and fetal nervous system. It is expressed to a lesser extent in heart and skeletal muscle. LIMK-1 hemizyosity is implicated in the impaired visuospatial constructive cognition of Williams syndrome.
Batch No.:	See product label
Unit size:	100 ug
Antigen:	Partial recombinant protein of human LIMK-1 (aa 548 to 648) with a GST tag.
Clone:	1A8
Other Names:	LIM domain kinase 1; LIMK1; LIMK
Accession:	LIMK1_HUMAN
Produced in:	Mouse
Purity:	Protein G purified immunoglobulin
Applications:	This antibody is recommended for WB, IHC and sandwich ELISA. For IHC, a concentration of 3 ug/mL is recommended. Biosensis recommends optimal dilutions/concentrations should be determined by the end user.
Specificity:	Specificity has been confirmed by WB and direct ELISA against the antigen.
Cross-reactivity:	Human. Other species have not been tested.
Form:	Lyophilised from PBS pH 7.2
Reconstitution:	Reconstitute in 100 uL of sterile water. Centrifuge to remove any insoluble material.
Storage:	After reconstitution keep aliquots at -20C for higher stability or at 2-8C with an appropriate antibacterial agent. Glycerol (1:1) may be added for additional stability. Avoid repetitive freeze/thaw cycles.
Expiry Date:	12 months after purchase



Immunohistochemical detection of LIMK-1 in paraffin-embedded, formalin fixed human stomach. Mouse monoclonal antibody to LIMK-1 used at a concentration of 3 µg/ml.

FOR RESEARCH USE ONLY