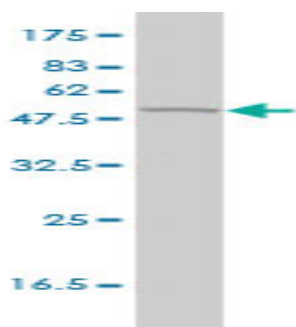


## Mouse monoclonal antibody to human GSH synthetase [5G4-2E9]: IgG

<b>Catalogue No.:</b>	M-919-100
<b>Description:</b>	Glutathione (GSH), a ubiquitous low molecular mass thiol, is important for a variety of biological functions including protection of cells from oxidative damage by free radicals, detoxification of xenobiotics, and membrane transport. GSH synthetase acts as a homodimer to catalyze the second step of glutathione biosynthesis, which is the ATP-dependent conversion of gamma-L-glutamul-L-cysteine to glutathione. Defects in this gene are a cause of glutathione synthetase deficiency.
<b>Batch No.:</b>	See product label
<b>Unit size:</b>	100 ug
<b>Antigen:</b>	Recombinant human GSH synthetase with GST tag.
<b>Clone:</b>	5G4-2E9
<b>Other Names:</b>	Glutathione synthetase; Glutathione synthase; GSH-S; GSS
<b>Accession:</b>	GSHB_HUMAN
<b>Produced in:</b>	Mouse
<b>Purity:</b>	Protein G purified immunoglobulin
<b>Applications:</b>	This antibody is recommended for WB and ELISA. Biosensis recommends optimal dilutions/concentrations should be determined by the end user.
<b>Specificity:</b>	Specificity has been confirmed by WB and direct ELISA against the antigen.
<b>Cross-reactivity:</b>	Human. Other species have not been tested.
<b>Form:</b>	Lyophilised from PBS pH 7.2
<b>Reconstitution:</b>	Reconstitute in 100 uL of sterile water. Centrifuge to remove any insoluble material.
<b>Storage:</b>	After reconstitution keep aliquots at -20C for higher stability or at 2-8C with an appropriate antibacterial agent. Glycerol (1:1) may be added for additional stability. Avoid repetitive freeze/thaw cycles.
<b>Expiry Date:</b>	12 months after purchase



Western blot detection of GSH synthetase in human colon homogenate.

FOR RESEARCH USE ONLY