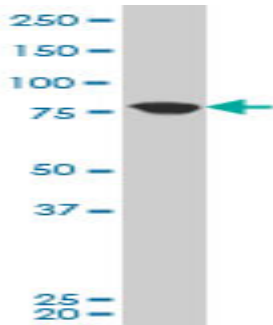


Mouse polyclonal antibody to human KCNN3: whole serum

Catalogue No.:	Mo-931-50
Description:	KCNN3 forms one of several calcium-activated potassium channels which are activated in a voltage-independent manner and have a relatively small unit conductance and high sensitivity to intracellular calcium. Activation is followed by membrane hyperpolarization. It is thought to regulate neuronal excitability by contributing to the slow component of synaptic afterhyperpolarization. The channel is blocked by apamin. KCCN3 contains an intracellular N and C terminus and 6 highly conserved transmembrane segments. It exists as a heterooligomer composed of 4 channel subunits each of which binds to a calmodulin subunit which regulates the channel activity through calcium-binding. These channels are thought to be potential therapeutic targets for disorders such as sleep apnea or sudden infant death syndrome and for regulating uterine contractions during labor. It was also suggested that KCNN3 may contribute to age-dependent decline in learning and memory and synaptic plasticity. Also it is thought that KCNN3 channel expression in endothelial cells may be a fundamental determinant of vascular tone and blood pressure.
Batch No.:	See product label
Unit size:	50 uL
Antigen:	Partial recombinant human KCNN3 (301-411) with a GST tag.
Other Names:	Small conductance calcium-activated potassium channel; Potassium intermediate/small conductance calcium-activated channel subfamily N member 3 isoform CRA_d; Potassium intermediate/small conductance calcium-activated channel subfamily N member 3
Accession:	Q8WVG7_HUMAN
Produced in:	Mouse
Purity:	Whole serum
Applications:	This antibody is recommended for WB and ELISA. Biosensis recommends optimal dilutions/concentrations should be determined by the end user.
Specificity:	Specificity has been confirmed by WB and direct ELISA against the antigen.
Cross-reactivity:	Human. Other species have not been tested.
Form:	Liquid. 50% glycerol
Storage:	Keep aliquots at -20C for higher stability or at 2-8C with an appropriate antibacterial agent. Avoid repetitive freeze/thaw cycles.
Expiry Date:	12 months after purchase

FOR RESEARCH USE ONLY

Mouse polyclonal antibody to human KCNN3: whole serum



Western blot detection of KCNN3 expression in human retinoblastoma whole cell lysate.

biosensis

FOR RESEARCH USE ONLY