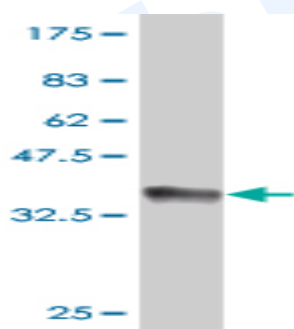


Mouse polyclonal antibody to human LMX-1.2: whole serum

Catalogue No.:	Mo-932-50
Description:	LMX-1.2 is essential for the specification of dorsal limb fate. It is expressed in most of tissues, with highest levels in testis, thyroid, duodenum, skeletal muscle, and pancreatic islets. Defects in LMX-1.2 are the cause of nail-patella syndrome (NPS), also known as Onychoosteodysplasia. NPS is a disease that causes abnormal skeletal patterning and renal dysplasia. LIM homeodomain proteins are characterised by the presence of 2 tandem cysteine/histidine-rich, zinc-binding LIM domains.
Batch No.:	See product label
Unit size:	50 uL
Antigen:	Partial recombinant human LMX-1.2 (1-110) with a GST tag.
Other Names:	LIM homeobox transcription factor 1 beta; LIM/homeobox protein LMX1B; LIM/homeobox protein 1.2; LMX-1.2; LMX1B
Accession:	LMX1B_HUMAN
Produced in:	Mouse
Purity:	Whole serum
Applications:	This antibody is recommended for WB and ELISA. Biosensis recommends optimal dilutions/concentrations should be determined by the end user.
Specificity:	Specificity has been confirmed by WB and direct ELISA against the antigen.
Cross-reactivity:	Human. Other species have not been tested.
Form:	Liquid. 50% glycerol
Storage:	Keep aliquots at -20C for higher stability or at 2-8C with an appropriate antibacterial agent. Avoid repetitive freeze/thaw cycles.
Expiry Date:	12 months after purchase



Western blot detection of GST tagged recombinant human LMX-1.2. Note the GST tag alone is 26 kDa.

FOR RESEARCH USE ONLY