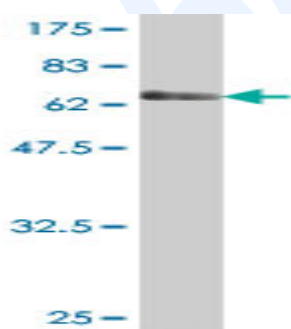


## Mouse polyclonal antibody to human Doc2-alpha: whole serum

<b>Catalogue No.:</b>	Mo-937-50
<b>Description:</b>	Doc2-alpha is mainly expressed in brain and is suggested to be involved in Ca(2+)-dependent neurotransmitter release. It may also be involved in dynein-dependent intracellular vesicle transport. The cDNA predicts a 400-amino acid protein with relative mass of 44,071 Da and 2 repeated C2-like domains in the C-terminal region. The C2 domain 1 is involved in binding calcium and phospholipids. It is predominantly expressed in the brain but also expressed in testis.
<b>Batch No.:</b>	See product label
<b>Unit size:</b>	50 uL
<b>Antigen:</b>	Recombinant human Doc2-alpha (1-400) with a GST tag.
<b>Other Names:</b>	Double C2-like domain-containing protein alpha; Doc2; DOC2A
<b>Accession:</b>	DOC2A_HUMAN
<b>Produced in:</b>	Mouse
<b>Purity:</b>	Whole serum
<b>Applications:</b>	This antibody is recommended for WB and ELISA. Biosensis recommends optimal dilutions/concentrations should be determined by the end user.
<b>Specificity:</b>	Specificity has been confirmed by WB and direct ELISA against the antigen.
<b>Cross-reactivity:</b>	Human. Other species have not been tested.
<b>Form:</b>	Liquid. 50% glycerol
<b>Storage:</b>	Keep aliquots at -20C for higher stability or at 2-8C with an appropriate antibacterial agent. Avoid repetitive freeze/thaw cycles.
<b>Expiry Date:</b>	12 months after purchase



Western blot detection of GST tagged recombinant human Doc2-alpha. Note the GST tag alone is 26 kDa.

FOR RESEARCH USE ONLY