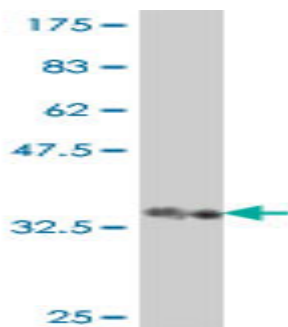




Mouse polyclonal antibody to human Slit-2: whole serum

Catalogue No.:	Mo-940-50
Description:	Slit-2 is thought to act as molecular guidance cue in cellular migration, and its function appears to be mediated by interaction with roundabout homolog (ROBO) receptors. It is a secreted protein known for its role of repulsion in axon guidance and neuronal migration that can also inhibit leukocyte chemotaxis induced by chemotactic factors.
Batch No.:	See product label
Unit size:	50 μ L
Antigen:	Partial recombinant human Slit-2 (1361-1459) with a GST tag.
Other Names:	Slit homolog 2 protein; SLIT2; SLIL3
Accession:	SLIT2_HUMAN
Produced in:	Mouse
Purity:	Whole serum
Applications:	This antibody is recommended for WB and ELISA. Biosensis recommends optimal dilutions/concentrations should be determined by the end user.
Specificity:	Specificity has been confirmed by WB and direct ELISA against the antigen.
Cross-reactivity:	Human. Other species have not been tested.
Form:	Liquid. 50% glycerol
Storage:	Keep aliquots at -20C for higher stability or at 2-8C with an appropriate antibacterial agent. Avoid repetitive freeze/thaw cycles.
Expiry Date:	12 months after purchase



Western blot detection of GST tagged recombinant human Slit-2. Note the GST tag alone is 26 kDa.

FOR RESEARCH USE ONLY