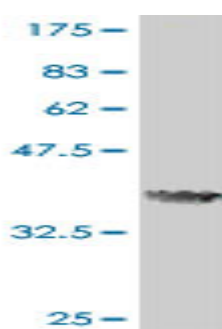


Mouse polyclonal antibody to human Semaphorin 6C: whole serum

Catalogue No.:	Mo-941-50
Description:	Semaphorin 6C is a transmembrane protein that shows growth cone collapsing activity on dorsal root ganglion neurons in vitro. It may be a stop signal for the dorsal root ganglion neurons, and possibly other neurons, in their target areas. It may also be involved in the maintenance and remodeling of neuronal connections.
Batch No.:	See product label
Unit size:	50 uL
Antigen:	Partial recombinant human Semaphorin 6C (27-126) with a GST tag.
Other Names:	Semaphorin Y; Sema Y; SEMA6C; KIAA1869; SEMAY
Accession:	SEM6C_HUMAN
Produced in:	Mouse
Purity:	Whole serum
Applications:	This antibody is recommended for WB and ELISA. Biosensis recommends optimal dilutions/concentrations should be determined by the end user.
Specificity:	Specificity has been confirmed by WB and direct ELISA against the antigen.
Cross-reactivity:	Human. Other species have not been tested.
Form:	Liquid. 50% glycerol
Storage:	Keep aliquots at -20C for higher stability or at 2-8C with an appropriate antibacterial agent. Avoid repetitive freeze/thaw cycles.
Expiry Date:	12 months after purchase



Western blot detection of GST tagged recombinant human Semaphorin 6C. Note the GST tag alone is 26 kDa.

FOR RESEARCH USE ONLY