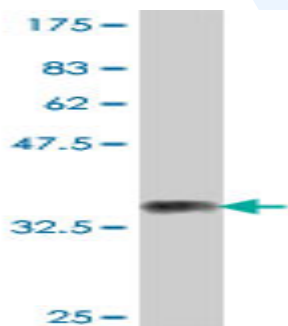




Mouse polyclonal antibody to human Semaphorin 4G: whole serum

| | |
|--------------------------|---|
| Catalogue No.: | Mo-953-50 |
| Description: | Semaphorins are a large family of conserved secreted and membrane associated proteins which possess a semaphorin (Sema) domain and a PSI domain (found in plexins, semaphorins and integrins) in the N-terminal extracellular portion. There are eight classes of Semaphorins. Semaphorin 4G is a transmembrane protein that may play a role in axon guidance. It belongs to the semaphorin family. |
| Batch No.: | See product label |
| Unit size: | 50 uL |
| Antigen: | Partial recombinant human Semaphorin 4G (24-115) with a GST tag. |
| Other Names: | SEMA4G; KIAA1619 |
| Accession: | SEM4G_HUMAN |
| Produced in: | Mouse |
| Purity: | Whole serum |
| Applications: | This antibody is recommended for WB and ELISA. Biosensis recommends optimal dilutions/concentrations should be determined by the end user. |
| Specificity: | Specificity has been confirmed by WB and direct ELISA against the antigen. |
| Cross-reactivity: | Human. Other species have not been tested. |
| Form: | Liquid. 50% glycerol |
| Storage: | Keep aliquots at -20C for higher stability or at 2-8C with an appropriate antibacterial agent. Avoid repetitive freeze/thaw cycles. |
| Expiry Date: | 12 months after purchase |



Western blot detection of GST tagged recombinant human Semaphorin 4G. Note the GST tag alone is 26 kDa.

FOR RESEARCH USE ONLY