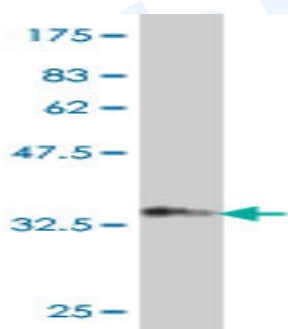


Mouse polyclonal antibody to human SorCS2: whole serum

Catalogue No.:	Mo-951-50
Description:	SorCS2 is a family member of vacuolar protein sorting 10 (VPS10) domain-containing receptor proteins. It is noted that all mammalian VPS10 domains carry an N-terminal signal peptide for translocation into the endoplasmic reticulum. The greatest similarity between the receptors is found in the C-terminal parts of the VPS10 domains, which harbor 12 cysteine residues with a characteristic spacing conserved in all VPS10 proteins from yeast to man. SorCS2 is a single-pass type I membrane protein that is highly expressed in brain and kidney. It is also detected at low levels in heart, liver, small intestine, skeletal muscle and thymus.
Batch No.:	See product label
Unit size:	50 uL
Antigen:	Partial recombinant human SorCS2 (951-1050) with a GST tag.
Other Names:	VPS10 domain-containing receptor SorCS2; SORCS2; KIAA1329
Accession:	SORC2_HUMAN
Produced in:	Mouse
Purity:	Whole serum
Applications:	This antibody is recommended for WB and ELISA. Biosensis recommends optimal dilutions/concentrations should be determined by the end user.
Specificity:	Specificity has been confirmed by WB and direct ELISA against the antigen.
Cross-reactivity:	Human. Other species have not been tested.
Form:	Liquid. 50% glycerol
Storage:	Keep aliquots at -20C for higher stability or at 2-8C with an appropriate antibacterial agent. Avoid repetitive freeze/thaw cycles.
Expiry Date:	12 months after purchase



Western blot detection of GST tagged recombinant human SorCS2. Note the GST tag alone is 26 kDa.

FOR RESEARCH USE ONLY