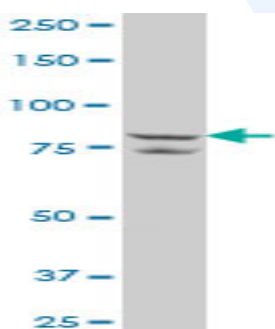


Mouse polyclonal antibody to human Solute carrier family 26 member 6: whole serum

Catalogue No.:	Mo-956-50
Description:	Solute carrier family 26 member 6 is a multi-pass membrane protein that belongs to the solute carrier 26 family, whose members encode anion transporter proteins. This particular family member is a protein involved in transporting chloride, oxalate, sulfate and bicarbonate. It is expressed ubiquitously with highest levels in kidney and pancreas and lower levels in heart, skeletal muscle, liver and placenta. It is also found in lung and brain.
Batch No.:	See product label
Unit size:	50 uL
Antigen:	Partial recombinant human Solute carrier family 26 member 6 (687-759) with a GST tag.
Other Names:	Pendrin-like protein 1; Pendrin-L1; SLC26A6
Accession:	S26A6_HUMAN
Produced in:	Mouse
Purity:	Whole serum
Applications:	This antibody is recommended for WB and ELISA. Biosensis recommends optimal dilutions/concentrations should be determined by the end user.
Specificity:	Specificity has been confirmed by WB and direct ELISA against the antigen.
Cross-reactivity:	Human. Other species have not been tested.
Form:	Liquid. 50% glycerol
Storage:	Keep aliquots at -20C for higher stability or at 2-8C with an appropriate antibacterial agent. Avoid repetitive freeze/thaw cycles.
Expiry Date:	12 months after purchase



Western blot detection of Solute carrier family 26 member 6 in HeLa cell lysate.

FOR RESEARCH USE ONLY